

AGENDA FOR BOARD OF DIRECTORS  
AUBURN SCHOOL DISTRICT NO. 408  
Monday, November 23, 2015

- I. TIME AND PLACE
  - 1. 7 p.m. at the James P. Fugate Administration Building
- II. ROLL CALL
  - 1. Roll call of board members
- III. PLEDGE OF ALLEGIANCE
- IV. AUDIENCE PARTICIPATION
  - 1. Written communications
  - 2. Scheduled communications
  - 3. Unscheduled communications
  - 4. Community groups and organizations
- V. LEGISLATIVE UPDATE
- VI. STUDENT AND STAFF RECOGNITION
  - 1. Recognition of student
  - 2. Recognition of staff
- VII. STUDENT PARTICIPATION
  - 1. Cascade Middle School PTSA report
  - 2. Activity/athletic report
  - 3. Request for travel
- VIII. SCHOOL PROGRAMS AND STUDENT ACHIEVEMENT
  - 1. Cascade Middle School 2015-16 PLC presentation
  - 2. 2015-17 Career and Technical Education district-wide plan
  - 3. Instructional technology implementation progress report
- IX. PERSONNEL
  - 1. Certificated and classified personnel report
- X. BUILDING PROGRAM
  - 1. Auburn High School modernization and reconstruction project
  - 2. Auburn High School work in progress report

XI. FINANCE

1. Vouchers
2. Request for authorization to surplus buses
2. Financial statements

XII. DIRECTORS

1. Approval of minutes
2. First reading of revised policies
3. Board reorganization
4. Resolution No. 1211-Educational Program and Operations Levy
5. WSSDA conference
6. Discussion
7. Executive session

## LEGISLATIVE UPDATE

The board will discuss legislative items.

## STUDENT AND STAFF RECOGNITION

### 1. Student Recognition

The Auburn School District Board of Directors will recognize Mia Rushmer, an eighth grade student at Cascade Middle School, for being an outstanding student.

Cascade's motto is PRIDE--Perseverance, Respect, Integrity, Discipline, and Excellence. Mia's name appeared on every teacher's list as a student who embodies the Cascade PRIDE motto.

Mia is not easily distracted and stays with a course of action despite obstacles. She stays engaged by remaining poised even when challenges arise. She shows consideration, appreciation, and acceptance of others. She is well liked by her peers and all teachers who have had her in class.

She lives a life that does the right thing when no one is watching. She may not be a vocal leader, but her actions always reflect integrity. Mia sets goals for herself and meets those expectations on a regular basis.

Everything Mia does is done with a spirit of excellence.

Cascade language arts teacher Amy Sleeth said, "Mia embodies everything her educators and the district want to see in a student: She is conscientious about her academics, involved in all kinds of school activities, and shows Cascade PRIDE every day in class. Mia is going to be a huge success in high school and far beyond. She is also just really, really nice, and I want to be just like her when I grow up!"

### 2. Staff Recognition

The Auburn School District Board of Directors will recognize Leianna Dixon, school psychologist at Lake View Elementary, for her outstanding service.

After completing her graduate school internship at Cascade and Gildo Rey, Leianna is in her fifth year as a school psychologist. She worked at Terminal Park and Lake View for four years. She now works at Lake View and the Chinook ECE program.

Born and raised in Maryland, Leianna earned her bachelor degree from the University of Maryland and moved west to attend the University of Washington where she earned her master's in school psychology.

In her role as school psychologist, she loves providing direct services to students. She runs social skills groups and enjoys the prevention aspects of working with students on social and emotional issues.

She also enjoys working with teachers to assist in developing strategies to help students who are struggling socially and emotionally. She cares deeply about students and their families.

Terminal Park teacher Gina Hamilton said, "The issues Leianna addresses with parents at IEP meetings are often very sensitive. She treats all families with dignity, reassurance, and optimism. We are so lucky to have her in our district."

Leianna has been married to her high school sweetheart, Morgan, for three years and lives in Seattle. In her off time, she enjoys hiking, traveling, taking weekend trips around Washington, and crocheting.

## STUDENT PARTICIPATION

1. Cascade Middle School PTSA Report

Ryan Foster, associate superintendent of principal leadership and school programs, will introduce Isaiah Johnson, Cascade Middle School principal, who will introduce Sheilia McLaughlin, Cascade PTSA president, who will introduce Stephanie Cunningham, PTSA vice president; Kaylyn Valdez, PTSA treasurer; and Terri Danz, PTSA secretary. The team will share a PowerPoint presentation as they present the Cascade Middle School PTSA report and answer questions from the board.

2. Activity/Athletic Report–Auburn High School Debate Program

Ryan Foster will introduce Richard Zimmerman, Auburn High School principal, who will introduce Donna Bowler, Auburn High School debate teacher, who will introduce Justice Bill, Kathleen Ellis, and Olivia Elston, students. The students will share information about the debate program at Auburn High School and answer questions from the board.

3. Request for Travel

- a. Twenty Auburn High School students request permission to travel to San Diego, California, Thursday to Sunday, December 17-20. The purpose of the trip is to compete in the national level wrestling tournament. Lodging will be at the La Quinta Inn, meals will be at local restaurants, and travel will be by airplane. All expenses will be paid by ASB funds. Dennis Herren, Erick Opel, Shane Onufer, Josh Girello, and Antonio Vacca, Auburn High School coaches, request permission to accompany the students. One substitute will be needed for one day.

Recommendation:

That the above request for travel be approved as presented.

# Cascade Middle School Parent-Teacher-Student Association

President – Sheilia McLaughlin

Vice President – Stephanie Cunningham

Treasurer – Kaylyn Valdez

Secretary – Terri Danz



**Cascade Middle School PTSA's Vision Statement:** That every child's potential become a reality. Cascade PTSA strives to support and advocate for our children by partnering with staff, families, and the wider community to create a safe and healthy learning environment where students can excel and feel confident in themselves.

**Our Goals for 2015-2016:**

- Provide support for cultural and educational programs at Cascade.
- Promote social activities that heighten school spirit, encourage family togetherness and promote humanitarian efforts within our community.
- Encourage and organize volunteer support for school and PTSA programs and events.
- Increase interest, involvement and understanding of our local PTA business. Build awareness about the critical role of the PTA in helping students reach their full potential.
- Conduct purposeful fundraising to support programs and events at Cascade.

**Cascade PTSA Mission Statement:**

To help students realize their full potential and enhance the education experience with PRIDE.

**Partner** with educational staff and community to enhance curriculum and raise funds to support our school and programs.

**Represent**, advocate and speak on behalf of students.

**Involve** and encourage greater parental support by providing a variety of opportunities to volunteer.

**Develop** a sense of community and social responsibility among all Cascade students.

**Enrich** by providing safe, fun and educational activities.







**Junior Honor Society Skate Night**



**McTeacher Night**



**Teacher Appreciation Week**

## PRIDE Coaches



## Future Events & Plans

- All-School Harvest Dance – November 20<sup>th</sup>
- Book Fair – November 16<sup>th</sup> through November 20<sup>th</sup>
- Teacher Dinner during Conferences Week – November 19<sup>th</sup>
- Focus Day at the State Capitol – February 3<sup>rd</sup>
- Night at the Museum – Wednesday, April 6<sup>th</sup>
- Junior Achievement – May 24<sup>th</sup> and 25<sup>th</sup>
- All-School Science Fair – Date to be Determined
- Other Department Special Event Nights – Dates to be Determined

PTSA is proud to support Principal Johnson and the entire wonderful staff, faculty, students and families of Cascade Middle School!



Go  
Spartans!!

## SCHOOL PROGRAMS AND STUDENT ACHIEVEMENT

### 1. Cascade Middle School 2015-16 PLC Presentation

Ryan Foster will introduce Isaiah Johnson, who will introduce Julie Campbell, Cascade Middle School assistant principal, and Marcia Gilyard, Cascade Middle School teacher. The team will give a brief PowerPoint overview of how the Professional Learning Community model has been utilized to increase student achievement at Cascade Middle School and answer questions from the board. This presentation aligns with the 2013-16 District Strategic Plan: Goal 1, Objective 1, Strategy 1.

### 2. 2015-17 Career and Technical Education District-Wide Plan

Heidi Harris, assistant superintendent of student learning, will introduce Julie DeBolt, executive director of student learning and high school programs, and Lew Keliher, coordinator of CTE, to present the district's 2015-2017 Career and Technical Education Plan, which includes the federal Carl Perkins grant application. [To view the CTE-District Wide Plan 2015-17, [click here](#).]

Recommendation:	That the board approve the 2015-17 Career and Technical Education District Plan and the 2015-16 Carl Perkins grant application as presented.
-----------------	--

### 3. Instructional Technology Implementation Progress Report

Vicki Bates, assistant superintendent of technology, will introduce Doug Gonzales, assistant director of instructional technology, and Randy Jones, coordinator of student achievement technology. The team will share a PowerPoint presentation and update the board on the district's implementation of instructional technology with an emphasis on professional development efforts this school year and systemic plans for the future. This presentation aligns with the 2013-16 District Strategic Plan, Goal 1: Student Achievement, Objective 4: Technology will be integral to administration and teaching and learning to prepare all students for career, college, and life beyond high school.



# **CASCADE: SPARTAN EXCELLENCE THROUGH PROFESSIONAL LEARNING COMMUNITIES**

**Monday, November 23, 2015**

SPARTAN EXCELLENCE:  
Everyone, Everyday, Everywhere

# PROFESSIONAL LEARNING COMMUNITIES



## NEW

Meeting together as a staff for 10 minutes each Monday and then breaking up into content areas.

- Provides accountability for punctuality and attendance
- Supports our SIP work around Literacy as we share SIOP strategies with staff to use during their instruction (SIOP Moment)



# PLC Literacy Focus



## School-wide Literacy Focus Based on Data Analysis

### (1) Speaking and Listening Skills

- Sample activities are demonstrated during All Staff PLC time and follow up with additional ideas are shared during Subject Area PLC time.
- SIOP SWRL – speaking, writing, reading & listening are expected in each lesson. SWRL is monitored during Wednesday Walkthroughs with Admin Team and Instructional Coaches.

SPARTAN EXCELLENCE:  
Everyone, Everyday, Everywhere



# PLC Literacy Focus



## School-wide Literacy Focus Based on Data Analysis (continued)

### **(2) Skill of summarizing in all content areas**

- utilizing sentence starters.
- common language and graphic organizers throughout the school.

# Each Content Area Was Asked to Choose a PLC Critical Question Focus



- **Question #1**

**What do we want our students to learn?**

- **Question #2**

**How will we know when each student has learned it?**

- **Question #3**

**How will we respond when students don't learn?**

- **Question #4**

**How can we extend and enrich the learning for students who have demonstrated proficiency?**

# ELA PLC Focus



- Focus on Question #3

**How will we respond when students don't learn?**

- Steps to Achieve Focus
  - utilize 6 district-wide formative assessments to determine students' levels of proficiency and set individualized learning targets.
  - utilize formative data to guide instruction, reteaching and other interventions.

# Math PLC Focus



- Focus on Question #1

**What do we want our students to learn?**

- Steps to Achieve Focus

**NOTE: 3 new math teachers this year.**

- Team members received scope and sequences.
- Grade level partner teachers are regularly meeting to plan together with the goal to clarify and meet state standards.

# Science PLC Focus



- Focus on Question #2  
**How will we know when each student has learned it?**
- Steps to Achieve Focus
  - comparing the new NGSS evidence statements to the DOK rubrics developed over the past 3 years.
  - Modifying the district assessments and making notes on how the DOK rubrics may need to be modified.

# Science PLC Focus



- **Steps to Achieve Focus (continued)**
  - **After each assessment, meet with grade level partner teacher and compare data.**
  - **Determine content that needs to be revisited or retaught.**

**NOTE: Chrome Books have been a great tool for collaboration (e.g. creating/modifying assessments) and classroom instruction (e.g. online labs and instruction).**

# Social Studies PLC Focus



- Focus on Question # 2

**How will we know when each student has learned it?**

- Steps to Achieve Focus
  - Review student assessments, compile and organize the data in a visual manner to easily show the concepts that most students met and did not meet standards.
  - Analyze the data as a team and identify standards/areas that are not being mastered by students.

SPARTAN EXCELLENCE:  
Everyone, Everyday, Everywhere

# School-Wide Work Around Question 4



- **IXL, Khan Academy on Chromebooks**
- **Idea: Working on a one time a month (Wednesday) where we provide more enrichment for students who understand the material and offer assistance to students who need more attention (2<sup>nd</sup> semester).**





# **CASCADE: SPARTAN EXCELLENCE THROUGH PROFESSIONAL LEARNING COMMUNITIES**

**SPARTAN EXCELLENCE:  
Everyone, Everyday, Everywhere**

# Career and Technical Education

## The Past, Present and Future

November 23, 2015

We are what we repeatedly do.

Excellence therefore, is not an act but a habit.

"Aristotle"

# Presentation Outline

- The Past, Present and Future of CTE.
- CTE Vision
- Share the 2015-2016 goals and the focus for Auburn School District CTE.
- Outline the purpose and use of federal Carl Perkins Grant Funds

# The Past

Vocational Education/CTE began with the Smith-Hughes Act of 1917, which funded Agriculture and Home Economics in local high schools with start-up and additional yearly funding.

1. 1933 to 1977 secondary vocational education programs in Washington State were funded at 2.2 times basic education funding. (*1965 BEA = \$305...total of \$671 to Voc Ed*)

2. In 1977 the legislature changed a weighted pupil funding mechanism of 2.2 times basic education funding to a staffing ration model and funding was dramatically reduced to 1.2 of basic education or converted to a staffing ratio of 16.67:1. (*Voc enhancement = \$546 in 1977...\$874 in 2010*)

# The Present

In 2013 - Both Senate and House Budgets proposed reductions in CTE funding by reducing the CTE Materials, Supplies and Operating Costs (CTE MSOC).

Funding was returned to the 2013-15 biennial budget and charged OSPI with reviewing Career and Technical Education (CTE) and Skill Center programs' funding enhancement formulas, expenditure accounting systems, and reporting.

# CTE Goals for 2015-2016

2015-2016 CTE Goals	Alignment	Support
Continue cross-district collaboration in program areas targeting increasing student achievement	<b><i>State: Improve the access to and quality of CTE</i></b>  <b><i>District: Goal 1, Objective 1</i></b>	<ul style="list-style-type: none"> <li>•Continued central office and building support of program-area PLCs</li> <li>•Professional development in creating assessments aligned to standards</li> <li>•OSPI Competitive Grant for CTE</li> </ul>
Continue exposure to Programs of Study with Middle and High School students and parents	<b><i>State: every student receives comprehensive career guidance</i></b>  <b><i>District: Goal 1—College and Career Readiness</i></b>	<ul style="list-style-type: none"> <li>•Reaching Out Fair</li> <li>• Expand your Horizons</li> <li>•Future Freshman Night</li> </ul>
Collect and analyze data: enrollment; program completers; dual credit; industry certifications; non-traditional populations	<b><i>State: results-driven education system</i></b>  <b><i>District: Goal 1, Objective 1, Objective 5</i></b>	<ul style="list-style-type: none"> <li>•Perkins Grant measures</li> <li>•OSPI Non-Traditional Grant</li> </ul>
CTE teachers and administrators to be <b><i>fully prepared and supported</i></b> in their roles as educator instructional leaders.		

# PLC Goals for Career & Technical Education Programs (Professional Learning Communities)

2015-2016

1. Identify common scope and sequence within your curriculum to strengthen understanding.
2. Create and administer common assessments for each unit of instruction.
3. Review and discuss data from the common assessments.
4. Adjust instruction as necessary based on the results of the Common Assessments.

# Our CTE Vision

The vision instructors are focused on is;

Develop strong programs that stretch the boundaries of ourselves and our students while preparing them for careers and continued learning.

Instructors were asked the following questions:

- What do you need to be your very best?
- What would it take to have a program that every student would want to be in?
- What would it be like to have Business Partners coming to your programs asking students to apply at their companies?

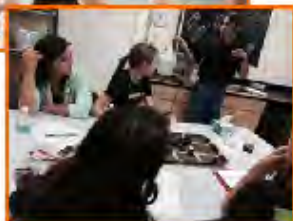


# The Career and Technical Education Model

## Extended Learning



Learning activities related to CTE course which occur **beyond the school day and/or school year** under the supervision of a certified CTE instructor



## Classroom Instruction/Theory

Represented in framework; alignment of academic and industry standards, and 21<sup>st</sup> Century Leadership Skills

## Shop/Laboratory

Where theory is put into practice; hands-on, project based approach to experiencing learning.  
Development of technical and professional skills.

Advisory Committees Industry evaluated equipment, curriculum, instructors, and programs. DWPs and Carl Perkins

# To Help Get to the Future; Programs of Study

- Deliberate sequence of courses
- Mixture of academic and technical high school courses
- Bridges high school to post-secondary options
- Focus on current demands in a global economy
- Fills the graduation requirement for a High School and Beyond plan—one of the first pieces in a portfolio



# Aerospace Assembly Program of Study



## Education Planning Guide for Middle School and Beyond

This program of study, along with other career planning materials, serves as a guide to assist students in the Auburn School District in developing a relevant middle-to-high school plan that will prepare them for further education and/or employment in the Science, Technology, Engineering and Math career cluster. The program of study outlined below can be individualized to meet each learner's education and career goals. It allows students to earn high school credits while completing coursework in middle school, earn college credits while completing coursework within high school, and apply those credits toward attainment of a college certificate and/or degree. It is important to share and review this plan with a parent/guardian and school counselor.

Auburn SD Component of Program of Study	Grade	English	Social Studies	Science	Math	Health/Fitness	Arts	Career and Technical	Related Electives	Auburn School District Graduation Requirements
	Middle School	Successfully complete required coursework for 6 <sup>th</sup> , 7 <sup>th</sup> and 8 <sup>th</sup> grade and these electives →						STEM Robotics, STEM Pre-Engineering or STEM Construction 1 and 2		
	9	Language Arts	World Studies (.5)	Science Links (.5)	Algebra I	Health (.5)		Power, Energy and Transportation 1 and Advanced*	Orientation	
	10	Language Arts	U. S. History	Biology	Geometry			Electronics 1 and 2*		
	11	American Literature 1, 2	Civics (.5)	Chemistry	Advanced Algebra and Trig	1.5 Credits from Fitness Courses	1.0 Credit from Fine Arts or Course Equivalencies	Aerospace Assembly 1	Two years of the same world language are required for students planning to enroll at a four-year university	
	12	Senior English Electives	Global Issues (.5)	Physics	AP Statistics or Pre-Calculus			Aerospace Assembly 2		

**Credit Requirements (22.5 credits total):**

4.0 credits - English  
2.5 credits - Social Studies  
3.0 credits - Math  
2.0 credits - Science  
1.5 credits - Fitness  
0.5 credits - Health  
1.0 credits - Arts  
1.0 credits - Occupational  
1.0 credits - Electives

**Additional Requirements:**

- High School and Beyond Plan
- Culminating Project/Portfolio
- Certificate of Academic Achievement or Approved Alternative

\*Students who earn a "B" or better in these courses are eligible for college credit. See page 2 for more information.

1st - High Program of Study	Apprenticeship Opportunities	Earn a Certificate and Enter the Workforce	Earn an Associate's Degree and transition to a 4-year university or enter the workforce	Earn a 4-year college degree, and then enter the workforce
	To learn more about apprenticeships in this program, go to:  <a href="#">Apprenticeship Registration &amp; Tracking</a> Aircraft Interiors Assembly Mechanic (1828) Aircraft Mechanic Airframe (1828) Assembly Machinist (173) Composite Manufacturing Specialist (1828) Industrial Electronics Maintenance Technician	<a href="#">Renton Technical College Air Washington</a>  <a href="#">Green River Community College Aerospace and Advanced Manufacturing Technology</a>	<a href="#">Green River Community College Associate in Science</a>  <a href="#">Highline Community College Engineering</a>	<a href="#">Central Washington University Aviation</a>

# Key Facts about Washington's CTE Programs

- 357,878 middle and high school students participated in CTE courses.
- 52,495 students are enrolled in middle school CTE courses focusing on science, technology, engineering and math (STEM)
- CTE Completers (secondary students that have completed 360 hours within a single locally determined program area) have a 91.4% graduation rate compared to the state graduation rate of 79.9%

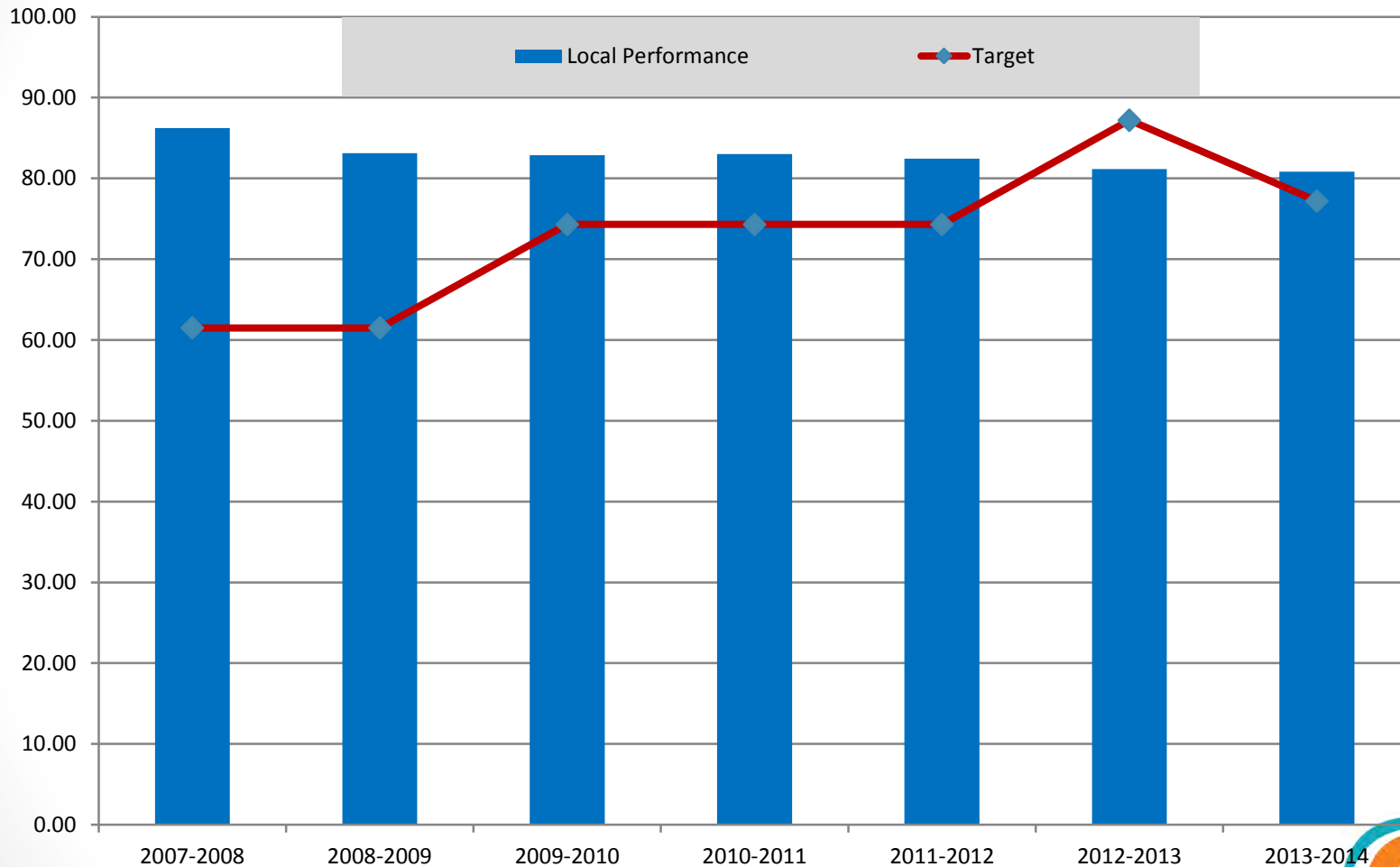


# Career and Technical Education Data

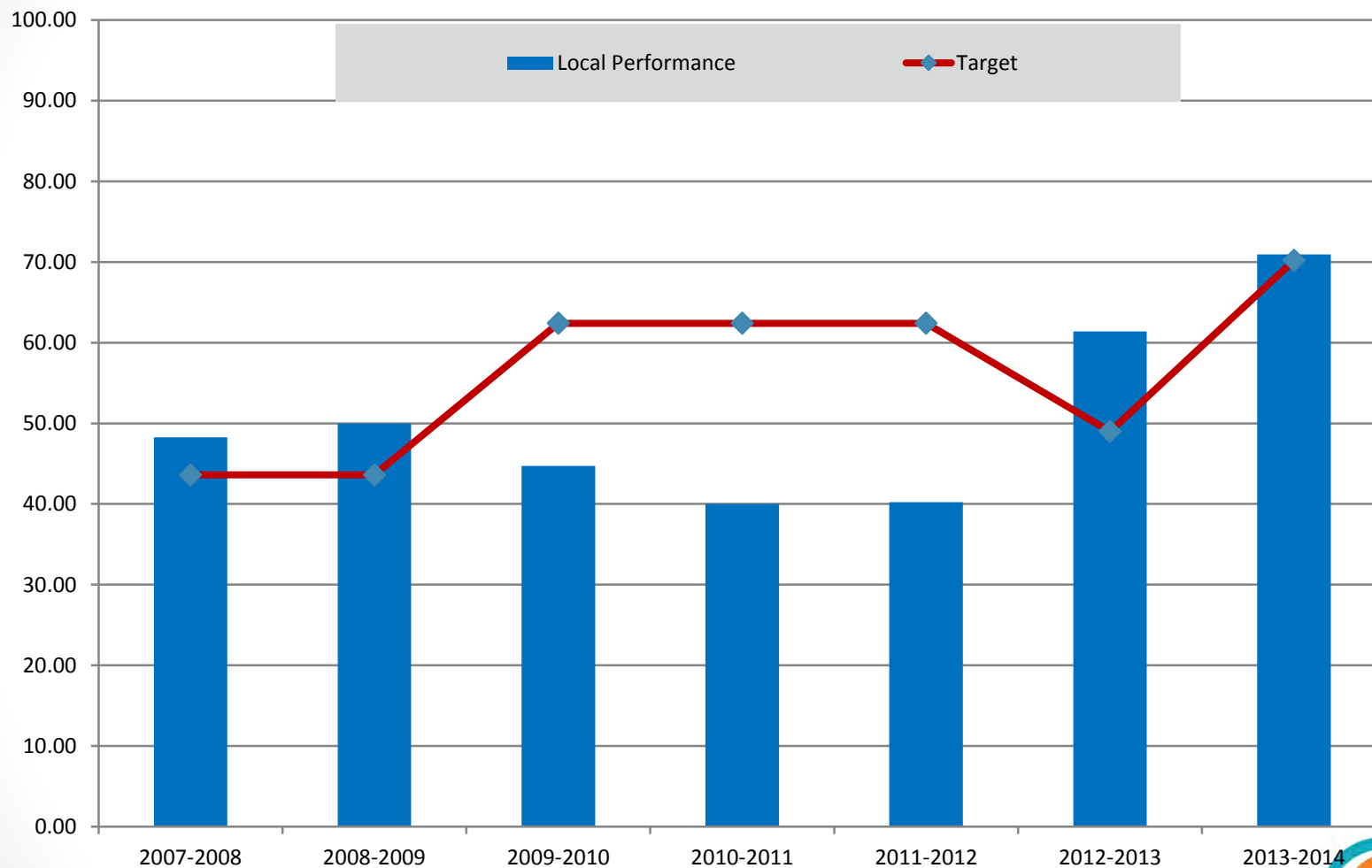
Perkins Grant Accountability for CTE Completers (four semesters or more in a CTE program):

- Success in reading/language arts as measured on the state assessment
- Success in mathematics as measured on the state assessment
- Who passed a technical skills assessment (industry certificate)
- Graduated from high school
- Who participated in a nontraditional field leading to employment (based upon gender)

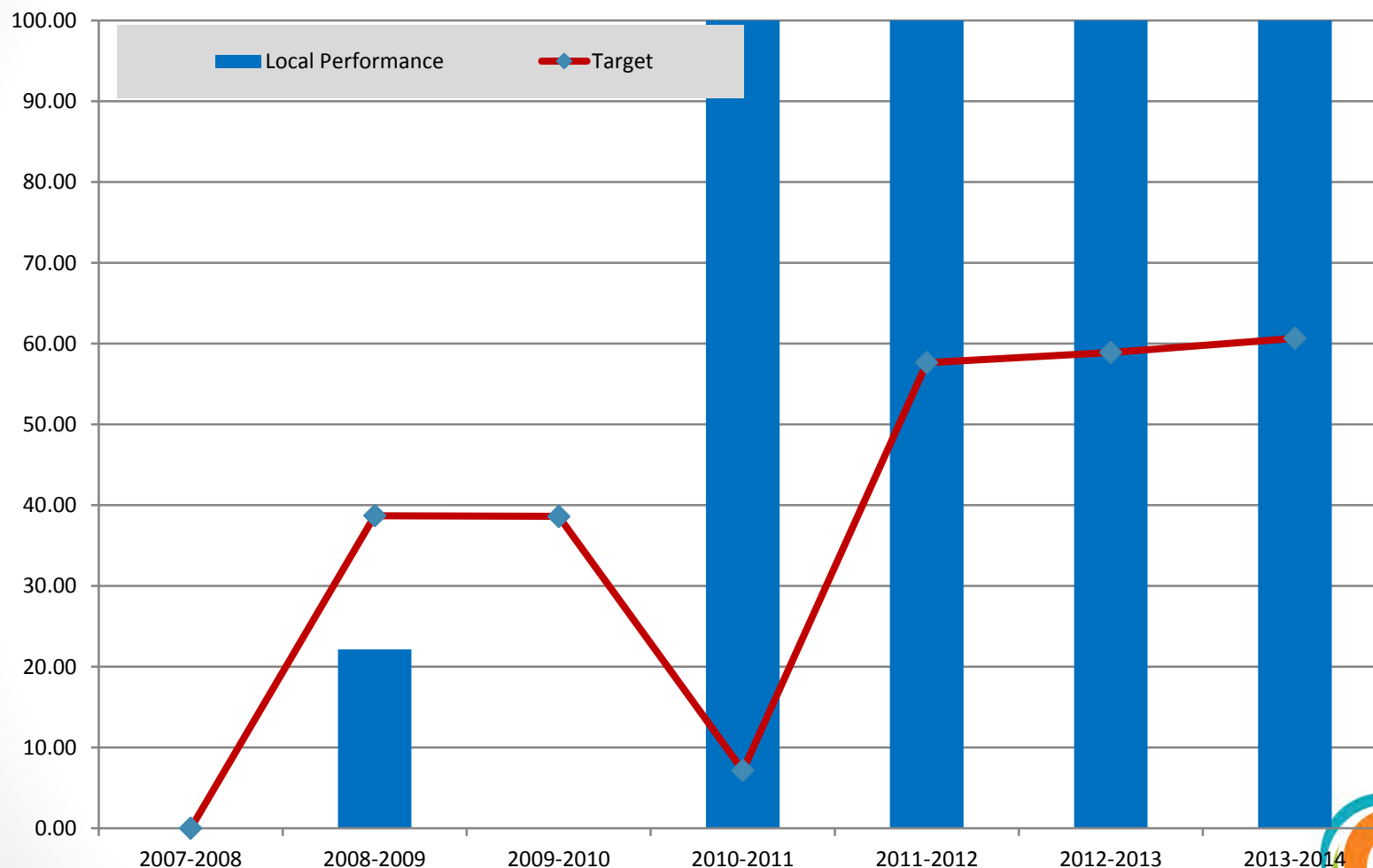
# Indicator 1S1 Language Arts/Reading Achievement



# Indicator 1S2 Mathematics Achievement

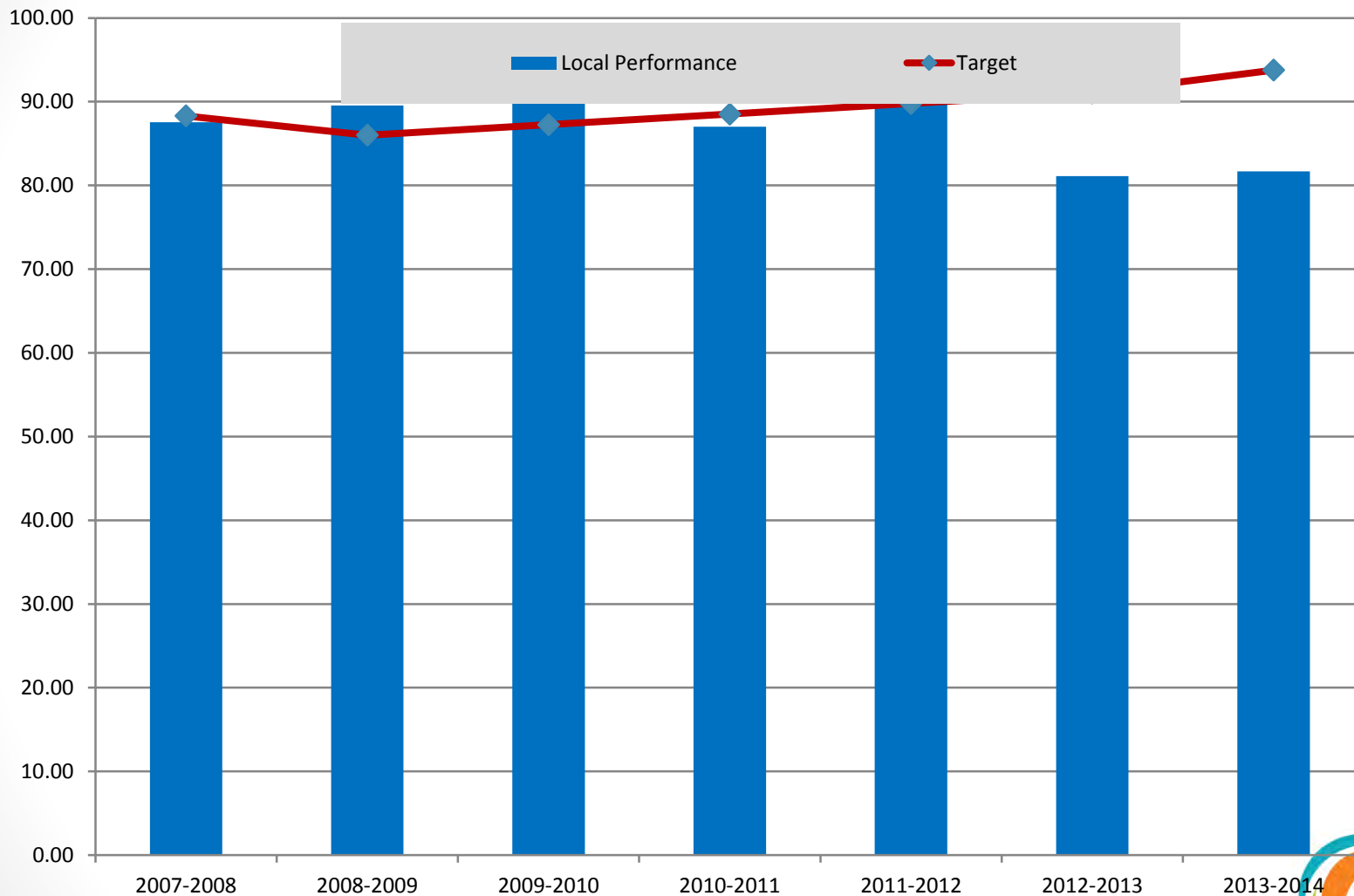


# Indicator 2S1 Industry-Recognized Assessment for Certification

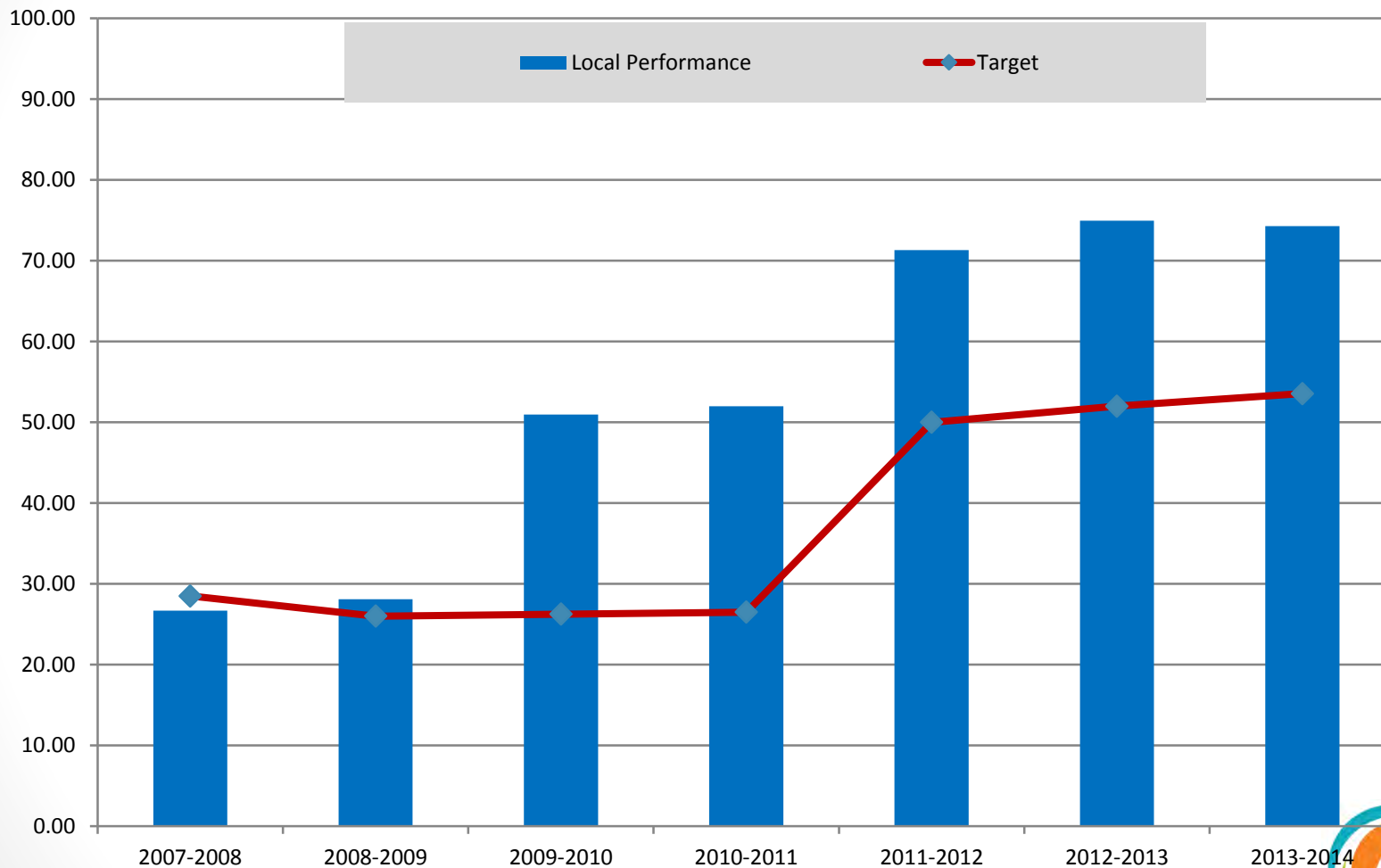




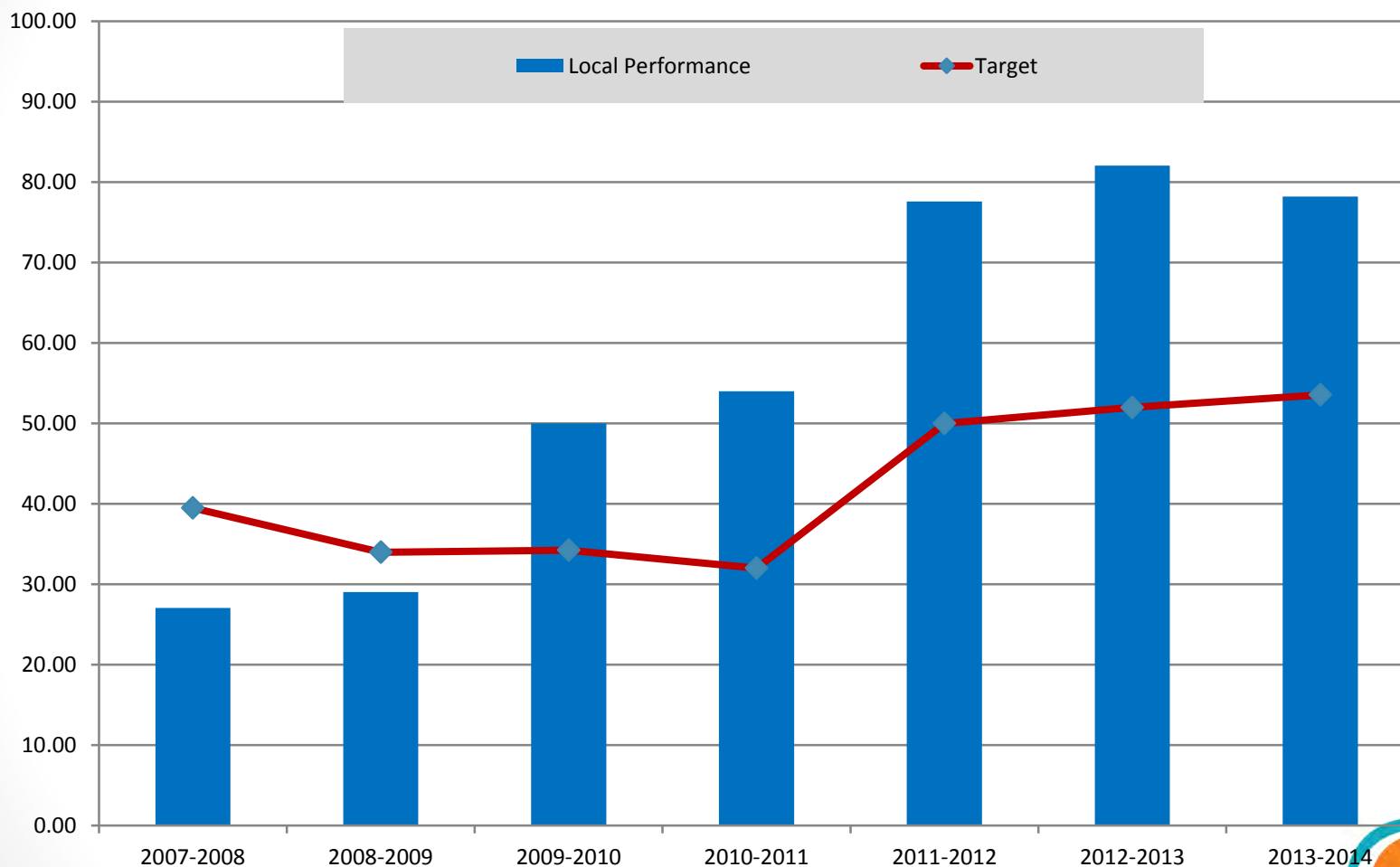
# Indicator 3S1 Graduation Rates (including GED)



# Indicator 6S1 Enrollment in the Districts Nontraditional Training and Employment Programs



# Indicator 6S2 Completers in Nontraditional Training and Employment Programs



# Perkins Grant Funding 2015-2016

*For the 2015-2016 school year, the Auburn School District has received \$124,673 to support our CTE programs in the following areas:*

- Career awareness and information tools and resources for students
- Provide para-educator support in CTE Programs at comprehensive high schools
- Professional development for teachers
- Dual credit options for students

# Individual CTE Programs District-Wide Plan

Overview ♦ Evaluation ♦ Planning

# QUESTIONS?

# Instructional Technology 2015 - 2016

Update to the Board of Directors  
November 23, 2015



# Objectives:

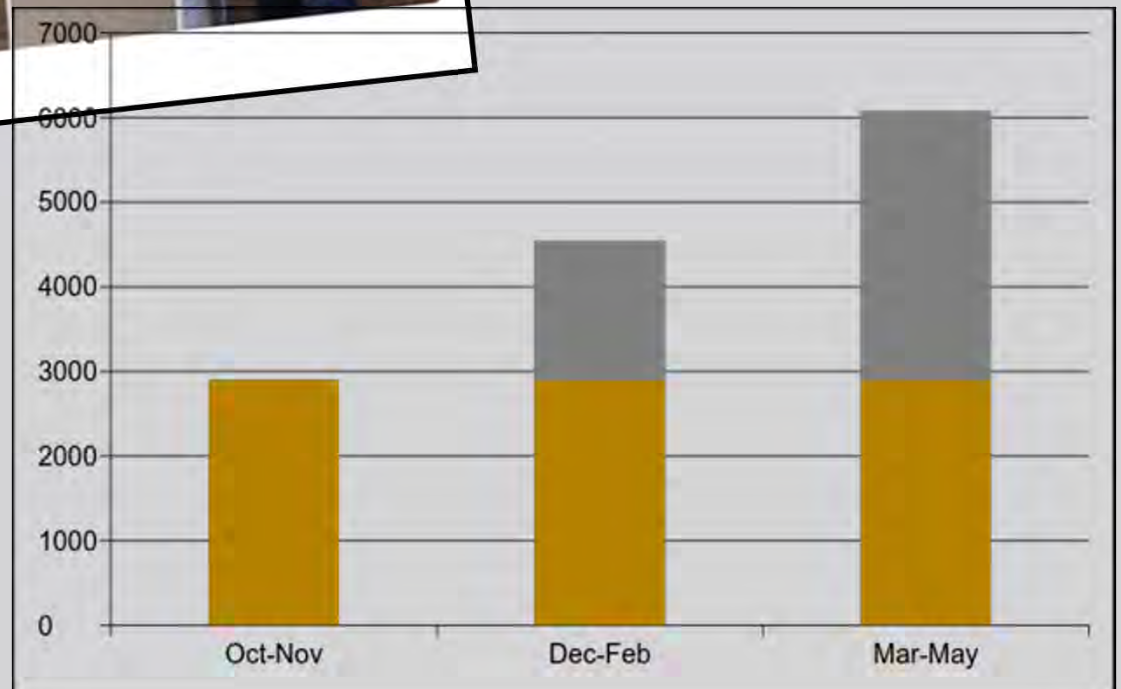
- ❑ Recap hardware deployment and supports
- ❑ Overview fall professional development activities
- ❑ Forecast next steps



# Student Chromebooks



Vicki Bates @ASDtech\_Vicki · Oct 13  
Lion enthusiasm at AMVHS @AuburnSD as Chromebook carts arrived today!



# 8/31 Teacher Chromebook Distribution

*Introduction to:*

- ❑ Digital Citizenship
- ❑ My School Data
- ❑ Google Apps for Education



The facilitators were awesome! Every presenter was excellent and very helpful and willing to meet the needs of the audience!

Need different groups based on background knowledge and skill to better fit everyone's needs.

# Targeted PD – Capacity Building

- ❑ Building Technology Coordinators (BTCs)
- ❑ Instructional Tech Support Specialists (ITSSs)
- ❑ Librarians
- ❑ [ATLA 2.0](#)



# Collaborative Integration

- ❑ Cross-district teacher leaders
  - Middle school content leads/teams
  - High school department chairs
  - Elementary Instructional Specialists
  - Title/LAP Specialists
  - ELL Specialists
  - Counselors
  - Psychologists
- ❑ Classified Staff
- ❑ Principals
- ❑ PLCs

Middle school content leads  
Student Special Services  
LAP Specialists  
Title Specialist  
ELL Specialists  
Counselors  
Principals  
Department of Student Learning  
Middle school content teams

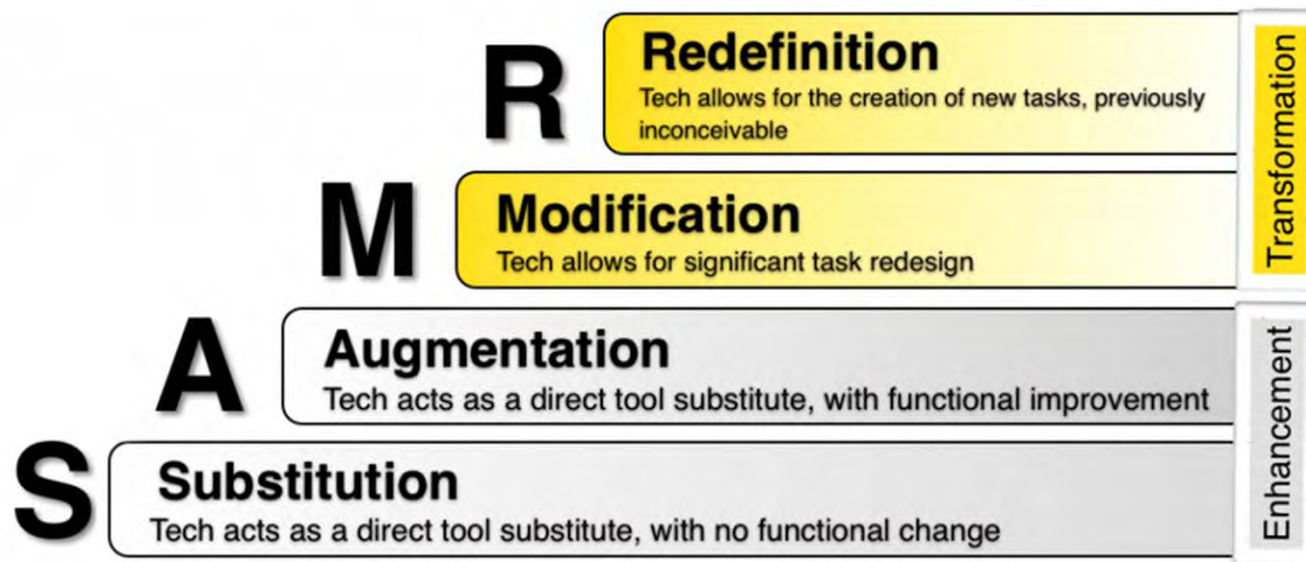
# Tech Collaborates

Middle School Instructional Specialists  
Classified Staff Elementary Instructional Specialists  
High school department chairs  
Cross-district teacher leaders  
Psychologists  
PLCs  
PSED



# Building a systemic approach

- ❑ Targets for professional development
- ❑ Technology integration model
- ❑ Instructional framework (CEL5D+) integration



# Building a systemic approach

- ❑ Common language/tools for training
- ❑ Framework for offering professional development
  - Differentiated district-delivered training: spring, summer offerings
  - Coordinated school-based offerings
- ❑ Differentiated principal training

# Instructional Technology

*Supporting staff to engage, educate, and empower students with technology*

Feedback? Questions?





## ***Vision for Technology Integration within the Instructional Framework***

### **PURPOSE**

The integration of technology enables students' development of transferable knowledge and skills related to communication, collaboration, creativity, critical thinking, cross-cultural citizenship and digital literacy. Technology allows students the ability to access and understand exactly what they are expected to learn via 24/7 access to electronic resources. The use of electronic learning management systems (i.e. classroom web pages, Google Classroom) facilitates the communication of learning targets to students and families, providing any time access to standards and learning targets for current lessons as well as previous and future related lessons.

### **STUDENT ENGAGEMENT**

Technology tools facilitate the active participation of all students throughout the learning process. Students can participate in technology-supported collaboration, discussion, writing, and investigation to deepen their learning and make it meaningful to themselves, their history and their future. Technology engages students in higher level thinking and links them to real-world demands for expression of learning through technology tools. The quality of engagement is enriched as technology and media is employed in transformative ways, moving beyond substitution and augmentation to modification and redefinition of learning activities or the learning environment. While targeted content or adaptive software meets individual or small group academic and/or language needs, Internet based resources offer a wide range of media that engages students in an equitable manner based on each student's background and life experience to foster culturally relevant teaching.

### **CURRICULUM & PEDAGOGY**

Internet and shared drive resources provide teachers access to district resources defining the sequence and standards for core instruction. Instruction with technology reflects a core understanding of content standards and technology standards valued in all disciplines with a deep and comprehensive knowledge of central concepts, issues, and equity for all learners. Students demonstrate reading, writing, thinking and reasoning through technology across a broad spectrum of content areas and can communicate in all modes and variety of technology media. Technology software and tools provide unique scaffolds for supporting students before they are able to work with content independently, whether because of needs based on language, disability, or simply time. With anytime access to sequenced lessons, activities, units and assessments, students may also scaffold their own learning to accelerate or extend, ultimately participating in the creation of their own knowledge.

### **ASSESSMENT FOR STUDENT LEARNING**

Technology provides a variety of tools and approaches to gather multiple forms of assessment data in an efficient manner, allowing teachers to provide immediate feedback to students and to alter their instruction immediately based on student understanding. Through research, writing, and performance using technology, students demonstrate and reflect upon - individually and collectively - their depth of understanding of the content, concepts and thinking skills necessary in each discipline. These multiple forms allow teachers to understand each student as a learner in order to more effectively enable higher levels of learning.

### **CLASSROOM ENVIRONMENT & CULTURE**

Classroom organization of resources and systems for student use support efficient access, responsible and ethical use of technology resources. With access to a device and the Internet, students learn both individually and collaboratively through purposeful classroom routines that lead to ownership and independence. The engagement of all students through technology communicates high expectations about all students' intellectual capabilities and creates a culture of inclusivity, equity, and accountability for learning.

## **Supporting Staff Development – Potential Emphases**



### **Use of Tools for Job Enhancement**

---

Google Apps for Education:

- Use the Chrome browser and extensions, i.e. Tone, Snap&Read
- Install and use apps via the Chrome Store, i.e. Desmos graphing calculator
- Access Google Drive (cloud based storage) to store, access and share files to create, communicate and collaborate
- Use Google Drive tools and add-ons to create Google Docs, Sheets, Slides and Forms

Understand and model digital citizenship

- Access Common Sense Media Digital Citizenship curriculum
- Understand and apply the Acceptable Use Policy and Social Media protocols

Set up and manage technology resources to support learning to include a Chromebook Cart, PC and projector.

Use the Internet to identify and retrieve information and media to be responsive to students' academic, linguistic, and cultural diversity.

### **Instructional Technology Integration**

---

Understand the SAMR technology integration model.

Apply with intention the SAMR integration model with the instructional framework and instructional planning cycle.

Apply a digital management system to create, communicate and collaborate with students (electronic document, teacher website, Google Classroom, other LMS, etc.) – *identify beginning to advanced?*

Apply electronic assessment tools to gather and analyze data to inform instruction (Google Forms, Skyward Online Assignment, etc.)

Apply remote interactive experiences to bring authentic real world experiences into the classroom (Google Hangout, Virtual Field Trips, etc.) – *identify beginning to advanced?*

Manage technology for small and large group instructional configurations.

Leverage technology resources to meet students' unique academic and linguistic needs and to provide culturally responsive instruction.

PERSONNEL--CERTIFICATED AND CLASSIFIED

1. Certificated and Classified Personnel Report

Attached is the personnel report, for certificated and classified personnel, for the board's approval.

Recommendation:                      That the board approve the attached report.

Classification	Job Type	Building	Name	Start Date	Hours	Rate of Pay	Comment
Curriculum-Noncurriculum	CERTIFICATED	AP SUPPORT	AUBURN HIGH	GRENZ, MICHAEL	10/22/2015	14	\$51.43
	CERTIFICATED	AP SUPPORT	AUBURN MOUNTAINVIEW	RUSH, JOSEPH	10/22/2015	14	\$42.51
	CERTIFICATED	ELL AFTER SCHOOL PROGRAM	CASCADE	ROBAYO-WHITE, MARTHA	10/22/2015	24	STIPEND 1500
	CERTIFICATED	ELL STAFF TRNG	ILAKO	ABBOTT, HEIDI	9/1/2015	4	\$38.42
	CERTIFICATED	ELL STAFF TRNG	DICK SCOBEE	ALIYEVA, NAILA	9/1/2015	4	\$52.46
	CERTIFICATED	ELL STAFF TRNG	OLYMPIC	BARIL, TYLER	9/1/2015	4	\$42.37
	CERTIFICATED	ELL STAFF TRNG	AUBURN RIVERSIDE	BOTKIN, SARAH	9/1/2015	4	\$27.83
	CERTIFICATED	ELL STAFF TRNG	TERMINAL PARK	BULSON, LAURIE	9/1/2015	4	\$47.16
	CERTIFICATED	ELL STAFF TRNG	PIONEER	CAMPBELL, LINDA	9/1/2015	4	\$52.46
	CERTIFICATED	ELL STAFF TRNG	GILDO REY	CARLSON-RAY, CAROL	9/1/2015	4	\$52.46
	CERTIFICATED	ELL STAFF TRNG	GILDO REY	CARNINO, IRINA	9/1/2015	4	\$34.11
	CERTIFICATED	ELL STAFF TRNG	WEST AUBURN	CLOW, LEE	9/1/2015	4	\$36.27
	CERTIFICATED	ELL STAFF TRNG	RAINIER	DALOS, HARRIETT	9/1/2015	4	\$47.16
	CERTIFICATED	ELL STAFF TRNG	HAZELWOOD	DONNELLY, HOLLY	9/1/2015	4	\$52.46
	CERTIFICATED	ELL STAFF TRNG	ALPAC	FERRELL, LEON	9/1/2015	4	\$36.98
	CERTIFICATED	ELL STAFF TRNG	DICK SCOBEE	GARNER, ZACHARY	9/1/2015	4	\$27.83
	CERTIFICATED	ELL STAFF TRNG	AUBURN HIGH	HANSEN, NECIA	9/1/2015	4	\$30.57
	CERTIFICATED	ELL STAFF TRNG	LAKE VIEW	HAWS, JAMIE	9/1/2015	4	\$48.64
	CERTIFICATED	ELL STAFF TRNG	EVERGREEN HTS	HERNDON, JENNIFER	9/1/2015	4	\$52.46
	CERTIFICATED	ELL STAFF TRNG	PIONEER	HOLBROOK, DEANNA	9/1/2015	4	\$47.21
	CERTIFICATED	ELL STAFF TRNG	CHINOOK	HOPKINS, JILL	9/1/2015	4	\$44.46
	CERTIFICATED	ELL STAFF TRNG	LAKELAND HILLS	LAMB, PETER	9/1/2015	4	\$52.46
	CERTIFICATED	ELL STAFF TRNG	PIONEER	LEWIS, AMANDA	9/1/2015	4	\$28.21
	CERTIFICATED	ELL STAFF TRNG	EVERGREEN HTS	LOUIE, ALISA	9/1/2015	4	\$38.42
	CERTIFICATED	ELL STAFF TRNG	WASHINGTON	LYON, LORIE	9/1/2015	4	\$28.56
	CERTIFICATED	ELL STAFF TRNG	MT. BAKER	MCCANN, VALLERY	9/1/2015	4	\$42.26
	CERTIFICATED	ELL STAFF TRNG	HAZELWOOD	NAGEL, MICHELLE	9/1/2015	4	\$33.37
	CERTIFICATED	ELL STAFF TRNG	LEA HILL	PIERCE, FLETCHER	9/1/2015	4	\$29.71
	CERTIFICATED	ELL STAFF TRNG	CASCADE	ROBAYO-WHITE, MARTHA	9/1/2015	4	\$52.46
	CERTIFICATED	ELL STAFF TRNG	GILDO REY	SHEMCHUCK, NATALYA	9/1/2015	4	\$28.21
	CERTIFICATED	ELL STAFF TRNG	AUBURN MOUNTAINVIEW	SULLIVAN, LINDA	9/1/2015	4	\$46.24
	CERTIFICATED	ELL STAFF TRNG	WASHINGTON	WILLIAMS, JENNIFER	9/1/2015	4	\$28.21
	CERTIFICATED	ELL STAFF TRNG	OLYMPIC	YEOMAN, ASHTI	9/1/2015	4	\$27.83
	CERTIFICATED	INST SUPPORT	AUBURN HIGH	COOKE, JENNIFER	9/8/2015	30	\$34.81
	CERTIFICATED	INST SUPPORT	AUBURN HIGH	SCHLEICHER, STEPHANIE	9/8/2015	30	\$47.21
	CERTIFICATED	INST TECH	LAKE VIEW	WHITE, BETH	10/1/2015	10	\$32.73
	CERTIFICATED	LIBRARY POOL FUNDS	LEA HILL	BLOSSER, REBEKAH	11/1/2015	5.75	\$40.97
	CERTIFICATED	NOVEL STUDY FRINDLE	GILDO REY	HULL, KAREN	11/3/2015	10	\$45.15
	CERTIFICATED	NOVEL WRITING	GILDO REY	BUNKER, KIMBERLY	11/6/2015	10	\$28.93
	CERTIFICATED	REFEREE	EVERGREEN HTS	ANSOTIGUE, JOHN	10/22/2015	20	\$20.00
	CERTIFICATED	REFEREE	ARTHUR JACOBSEN	CHRISTIANSEN, STEPHEN	9/14/2015	6	\$20.00
	CERTIFICATED	REFEREE	LEA HILL	FETTIG, MICHAEL	10/1/2015	10	\$20.00
	CERTIFICATED	REFEREE	EVERGREEN HTS	GRAB, ARNIE	10/22/2015	20	\$20.00
	CERTIFICATED	REFEREE	ARTHUR JACOBSEN	HESS, WILLIAM	9/14/2015	9	\$20.00
	CERTIFICATED	REFEREE	LEA HILL	PODESZWA, TY	10/1/2015	10	\$20.00
	CERTIFICATED	SLP COLLABORATION	ANNEX	QUALLS, VERNE	11/2/2015	6	\$52.46
	CERTIFICATED	TITLE 1 COORD/ADM	AUBURN MOUNTAINVIEW	O'BRIEN, LEAHMARIE	9/1/2015	300	\$45.83
	CERTIFICATED	TUTORING	MT. BAKER	CARNAHAN, ERIN	10/27/2015	10	\$51.43
	CERTIFICATED	TUTORING	MT. BAKER	CARSTENS, CORRIE	10/27/2015	10	\$52.46
	CERTIFICATED	WA-AIM TRAINING	WASHINGTON	CAIRNEY, DAWNE	10/20/2015	2	\$40.64
	CERTIFICATED	WA-AIM TRAINING	WASHINGTON	LOCKE, SARA	10/20/2015	2	\$48.00
	CERTIFICATED	WA-AIM TRAINING	WASHINGTON	PETERSON, STEPHANIE	10/20/2015	2	\$30.57

**New Hire**

CERTIFICATED TEACHER/KINDERGARTEN	ARTHUR JACOBSEN	MCCARRY, MEGAN	11/12/2015	C8, S7
-----------------------------------	-----------------	----------------	------------	--------

## Resignation

# PERSONNEL REPORT - CLASSIFIED

## Curriculum-Noncurriculum

CLASSIFIED	ASSISTANT COACH - BOYS BASKETBALL	AUBURN RIVERSIDE	AUSTIN CAPTVILLE, SHUN JEFFREI JOSEPH	11/16/2015	252	STIPEND - \$4,680
CLASSIFIED	ASSISTANT COACH - BOYS BASKETBALL	MT BAKER	JORDAN, JEFFREY	11/2/2015	150	STIPEND - \$3,494
CLASSIFIED	ASSISTANT COACH - BOYS BASKETBALL	RAINIER	KRAVICH, JOHN	11/2/2015	150	STIPEND - \$2,940
CLASSIFIED	ASSISTANT COACH - BOYS SOCCER	RAINIER	MURR, JAMES	11/2/2015	150	STIPEND - \$2,940
CLASSIFIED	ASSISTANT COACH - BOYS SOCCER	CASCADE	QUITENO, KEVIN	11/2/2015	150	STIPEND - \$2,940
CLASSIFIED	ASSISTANT COACH - BOYS SOCCER	MT BAKER	VICKERS, CAMERON	11/2/2015	150	STIPEND - \$2,940
CLASSIFIED	ASSISTANT COACH - GIRLS BASKETBALL	AUBURN HIGH	SMITH, MICHAEL	11/16/2015	252	STIPEND - \$4,295
CLASSIFIED	ASSISTANT COACH - GYMNASTICS	CASCADE	GARNICA, EBONIE	11/2/2015	150	STIPEND - \$2,940
CLASSIFIED	ASSISTANT COACH - GYMNASTICS	AUBURN HIGH	GOMEZ, TIA	11/9/2015	216	STIPEND - \$3,614
CLASSIFIED	ASSISTANT COACH - GYMNASTICS	AUBURN HIGH	PERRY, HALLE	11/9/2015	216	STIPEND - \$3,614
CLASSIFIED	ASSISTANT COACH - GYMNASTICS	MT BAKER	SWANSON, KAMLYN	11/2/2015	150	STIPEND - \$2,697
CLASSIFIED	ASSISTANT COACH - SWIM (BOYS)	AUBURN MOUNTAINVIEW	ATWOOD, RYAN	11/16/2015	198	STIPEND - \$3,318
CLASSIFIED	ASSISTANT COACH - WRESTLING	AUBURN HIGH	GIRELLO, SHANE	11/16/2015	180	STIPEND - \$3,614
CLASSIFIED	ASSISTANT COACH - WRESTLING	AUBURN HIGH	HERREN JR., DENNIS	11/16/2015	180	STIPEND - \$5,726
CLASSIFIED	ASSISTANT COACH - WRESTLING	AUBURN HIGH	ONUFR, SHANE	11/16/2015	180	STIPEND - \$3,614
CLASSIFIED	ASSISTANT COACH - WRESTLING	AUBURN HIGH	VACCA, ANTONIO	11/16/2015	180	STIPEND - \$4,295
CLASSIFIED	COACH - GYMNASTICS, 6TH GRADE	CASCADE	SECREST, AMY	11/2/2015	40	STIPEND - \$728
CLASSIFIED	COACH - GYMNASTICS, 6TH GRADE	MT BAKER	SWANSON, KARI	11/2/2015	40	STIPEND - \$728
CLASSIFIED	CONSULTANT - ORCHESTRA	AUBURN MOUNTAINVIEW	HIUO, BEVERLY	11/1/2015	24	\$20.00
CLASSIFIED	EXTRA HOURS	DICK SCOBEE	BROOKS-DUNHAM, CHERITH	9/8/2015	4	\$17.16
CLASSIFIED	EXTRA HOURS	MT BAKER	HANCOCK, LINDSEY	9/8/2015	4	\$17.16
CLASSIFIED	EXTRA HOURS	OLYMPIC	LAMA, MARK	9/8/2015	4	\$17.16
CLASSIFIED	EXTRA HOURS	CASCADE	OWENS, JEANNETTE	9/8/2015	4	\$17.16
CLASSIFIED	EXTRA HOURS - OPEN HOUSE	HAZELWOOD	KISTLER, KRystal	10/20/2015	1.5	\$17.85
CLASSIFIED	EXTRA HOURS - PARENT INVOLVEMENT NIGH	AUBURN RIVERSIDE	ANDERSON, ANGELA	11/23/2015	15	\$18.19
CLASSIFIED	EXTRA HOURS - RIGHT RESPONSE	ADMIN	COATES, LAINE	11/3/2015	1	\$18.19
CLASSIFIED	EXTRA HOURS - RIGHT RESPONSE	ADMIN	POLLEY, KENNA	11/3/2015	1	\$17.51
CLASSIFIED	EXTRA HOURS - RIGHT RESPONSE	ADMIN	ROY, ELIZABETH	11/3/2015	1	\$17.51
CLASSIFIED	EXTRA HOURS - RIGHT RESPONSE	ADMIN	SCHMID, JANIE RAE	11/3/2015	1	\$18.19
CLASSIFIED	EXTRA HOURS - RIGHT RESPONSE	ADMIN	SHOWN, SHARLEEN	11/3/2015	1	\$17.51
CLASSIFIED	EXTRA HOURS - RIGHT RESPONSE	ADMIN	WILES, JOSEPH	11/3/2015	1	\$17.76
CLASSIFIED	EXTRA HOURS - RIGHT RESPONSE	ADMIN	WILLS, BRIANNE	11/3/2015	1	\$17.51
CLASSIFIED	EXTRA HOURS - RIGHT RESPONSE	ADMIN	WOODY JR., JOHN	11/3/2015	1	\$17.51
CLASSIFIED	EXTRA HOURS - SES PROGRAM SUPPORT	DEPT OF STUDENT LEARNING	GREER, LISA	10/29/2015	50	\$24.07
CLASSIFIED	HEAD COACH - CHEER (WINTER)	AUBURN HIGH	WAKEFIELD, REINA	11/9/2015	198	STIPEND - \$5,332
CLASSIFIED	HEAD COACH - GYMNASTICS	AUBURN HIGH	WILSON, KRISTIE	11/9/2015	216	STIPEND - \$5,726
CLASSIFIED	HEAD COACH - SWIM (BOYS)	AUBURN HIGH	POTTERF, KELSIE	11/16/2015	198	STIPEND - \$4,423
CLASSIFIED	HEAD COACH - WRESTLING (GIRLS)	AUBURN RIVERSIDE	MONTGOMERY, AMBERLE	11/16/2015	180	STIPEND - \$4,819
CLASSIFIED	HEAD COACH - WRESTLING (GIRLS)	AUBURN HIGH	OPEL, ERICK	11/16/2015	180	STIPEND - \$5,726
CLASSIFIED	INSTRUCTIONAL HOURS - CLASS COVERAGE	CASCADE	DELAPLAINE, SARAH	10/1/2015	12	\$17.51
CLASSIFIED	INSTRUCTIONAL HOURS - CLASS COVERAGE	CASCADE	SECREST, AMY L	10/1/2015	12	\$18.03
CLASSIFIED	INSTRUCTIONAL HOURS - SCIENCE CURRICULUM	DEPT OF STUDENT LEARNING	LIGHTBURN, TRESA	11/4/2015	15	\$17.69
CLASSIFIED	ITSS	ALPAC	HILES, MARINA	11/3/2015		STIPEND - \$2,549.60
CLASSIFIED	PROGRAM SUPPORT - TITLE	AUBURN MOUNTAINVIEW	BALDWIN, ARTHUR	9/30/2015	1.25	\$17.16
CLASSIFIED	PROGRAM SUPPORT - TITLE	AUBURN MOUNTAINVIEW	NEWMAN, NATALIA	9/30/2015	1.25	\$17.16

## New Hire

CLASSIFIED	PARA EDUCATOR SPECIAL EDUCATION CLASS-SIZE	CHINOOK ELEMENTARY	BEDSWORTH, DEBORAH	11/16/2015	6.5	\$17.51	QUALIFIED APPLICANT
CLASSIFIED	PARA EDUCATOR SPECIAL KIDS	AUBURN HIGH SCHOOL	MCNEIL, APRIL	11/16/2015	6.5	\$17.51	QUALIFIED APPLICANT
CLASSIFIED	PARA EDUCATOR SPECIAL KIDS	OLYMPIC MIDDLE SCHOOL	SCHMAHL, DAWNA	11/16/2015	6.5	\$17.51	QUALIFIED APPLICANT
CLASSIFIED	PARA EDUCATOR SPECIAL KIDS	LAKE VIEW ELEMENTARY	SWALES, PAYTON	11/13/2015	6.5	\$17.51	QUALIFIED APPLICANT

## Resignation

CLASSIFIED	LEAD THEATRE TECHNICIAN	PAC/ART/TAM	LYRBERG, TROY	12/1/2015		PERSONAL
CLASSIFIED	LIFEGUARD	POOL	SNYDER, ERIK	11/13/2015		EMPLOYMENT ELSEWHERE
CLASSIFIED	LIFEGUARD	POOL	ZANOTELLI, JULIA	11/13/2015		EMPLOYMENT ELSEWHERE
CLASSIFIED	PARA-EDUCATOR ELL	TERMINAL PARK	PASBRIG, CAMERON	11/12/2015		EMPLOYMENT ELSEWHERE
CLASSIFIED	PARA-EDUCATOR SPECIAL ED SLC	AUBURN HIGH	KAUFMANN, PATRICIA	1/29/2016		RETIREMENT
CLASSIFIED	PARA-EDUCATOR SPECIAL ED SPECIAL KIDS	AUBURN HIGH	HAGER, KAILYN	12/18/2015		PERSONAL

## Supervision

CLASSIFIED	GIRLS BASKETBALL	AUBURN RIVERSIDE	GEE, KARINA	11/16/2015	150	\$20.00
CLASSIFIED	GIRLS LACROSSE	AUBURN RIVERSIDE	GRECO, KEMBER	2/29/2016	213	\$20.00
CLASSIFIED	OPEN HOUSE - CHILD CARE	AUURN HIGH	CHITTENDEN, AMANDA	10/1/2015	10.5	\$20.00
CLASSIFIED	OPEN HOUSE - CHILD CARE	AUURN HIGH	DISTEFANO RIGGER, KAREN	10/1/2015	10.5	\$20.00
CLASSIFIED	OPEN HOUSE - CHILD CARE	AUURN HIGH	GARNICA, EBONIE	10/1/2015	10.5	\$20.00
CLASSIFIED	OPEN HOUSE - CHILD CARE	AUURN HIGH	REYNOLDS, ALICE	10/1/2015	10.5	\$20.00

## CERTIFICATED RESUME

Megan McCarry--kindergarten--Arthur Jacobsen Elementary. Ms. McCarry earned her bachelor and master degrees at Washington State University. Megan previously worked for the Spokane School District. Megan is also a graduate of Auburn High School.Beverly Mahaffey--first grade--Alpac Elementary. Ms. Mahaffey earned her bachelor and master degrees at City University. Beverly previously worked for the Kent School District.

BUILDING PROGRAM

1. Auburn High School Modernization and Reconstruction Project

Attached is a copy of Change Order No. 85 for the Auburn High School Modernization & Reconstruction project which should be considered to permit a change in the construction contract amount.

Original Contract	\$80,570,700.00
Previously Approved	4,903,650.00
Change Order No. 85	+\$ 30,320.00
New Contract Amount	<u>\$85,504,670.00</u>

Jeffrey Grose, executive director of capital projects, will be present to recommend acceptance of the change order.

Recommendation: That Change Order No. 85 be accepted for the Auburn High School Modernization and Reconstruction project and the contract amount be increased by \$30,320.00 for a new contract amount of \$85,504,670.00.

2. Auburn High School-Work in Progress Report

Jeffrey Grose will be present to report on the progress of the Auburn High School Modernization & Reconstruction project.

# Change Order

---

PROJECT:	AUBURN HIGH SCHOOL MODERNIZATIONS & RECONSTRUCTION 800 Fourth Street NE, Auburn, WA 98002	CHANGE ORDER NO.:	85
TO CONTRACTOR:	Lydig Construction Company 3180 139 <sup>th</sup> Ave SE, Suite 110 Bellevue, WA 98005	DATE:	November 16, 2015
		CONTRACT DATED:	February 18, 2013
		ARCHITECT'S PROJECT NO.:	121-10016

The Contract is changed as follows:

1.	CCA-459	Modify sink and faucet in Workroom 609.	\$1,665.00
2.	CCA-479	Provide carpet at ramp in Green Room 618.	\$526.00
3.	CCA-488	Provide fabric cover at speaker enclosures in PAC.	\$3,207.00
4.	CCA-500	Modify Phase 2 wireless access point enclosures.	\$3,545.00
5.	CCA-503	Provide door thresholds at Corridor 074 and Main Gym 708.	\$6,259.00
6.	CCA-508	Provide aluminum storefront door and frame at Tickets 604.	\$6,054.00
7.	CCA-512	Modify exterior louvers at PAC Loading 602.	\$1,130.00
8.	CCA-531	Provide improvements at existing walls at PAC elevator openings.	<u>\$7,934.00</u>
		Total This Change Order	\$30,320.00

---

The original Contract Sum was	\$	80,570,700.00
Net change by previously authorized Change Orders	\$	4,903,650.00
The Contract Sum prior to this Change Order was	\$	85,474,350.00
The Contract Sum will be increased by this change order	\$	30,320.00
The new Contract Sum including this Change Order will be	\$	85,504,670.00

The Contract Time will be unchanged by 0 days  
The date of Substantial Completion as of the date of this Change Order therefore is: July 1, 2016

Pursuant to the Contract, the execution of this Change Order constitutes a waiver of claims by the Contractor arising out of the Work to be performed or deleted pursuant to this Change Order, except as specifically described herein. Reservation of rights will be deemed waived and are void unless the reserved rights are specifically described in detail to the satisfaction of the Owner and are initialed by the Owner.

NAC Architecture  
2025 First Avenue, Suite 300  
Seattle, WA 98121

Auburn School District #408  
915 Fourth Street NE  
Auburn, WA 98002

Lydig Construction Company  
3180 139<sup>th</sup> Ave SE, Suite 110  
Bellevue, WA 98005



By: \_\_\_\_\_  
Brent Compton  
Date: November 16, 2015

By: \_\_\_\_\_  
Cindi Blansfield  
Date: \_\_\_\_\_



By: \_\_\_\_\_  
Brandon Watts  
Date: 11-18-2015



FINANCE

1. Vouchers

Vouchers will be presented.

Recommendation: That these vouchers be signed.

2. Request for Authorization to Surplus Buses

Authorization is requested to surplus and sell, at a public sale, the itemized list of surplus buses. These items will be sold in accordance with existing board policy and statutes.

<u>Bus #</u>	<u>Year</u>	<u>Mileage</u>	<u>Condition</u>
107	1994	181,147	Body poor, interior poor, high mileage on engine and transmission
108	1994	185,222	Body poor, interior poor, high mileage on engine and transmission
109	1994	166,258	Body poor, interior poor, high mileage on engine and transmission
110	1994	205,637	Body poor, interior poor, high mileage on engine and transmission

Recommendation: That the board authorize the surplus and sale of the listed items.

3. Financial Statements

Financial statements for the month of October, 2015, are included in the board background material.

The following vouchers, as audited and certified by the Auditing Officer as required by RCW 42.24.080, and those expense reimbursement claims certified as required by RCW 42.24.090, are approved for payment. Those payments have been recorded on this listing which has been made available to the board.

As of November 23, 2015, the board, by a \_\_\_\_\_ vote, approves payments, totaling \$1,079,115.81. The payments are further identified in this document.

Total by Payment Type for Cash Account, US Bank of Washington:  
Warrant Numbers 428682 through 428919, totaling \$1,079,115.81

Secretary _____	Board Member _____
Board Member _____	Board Member _____
Board Member _____	Board Member _____

Check Nbr	Vendor Name	Check Date	Check Amount
428682	*ALLIANCE ONE	11/23/2015	456.73
428683	3 WIRE GROUP INC	11/23/2015	180.87
428684	ADI GLOBAL DISTRIBUTION	11/23/2015	705.14
428685	AGRISHOP INC	11/23/2015	60.91
428686	ALPINE PRODUCTS INC	11/23/2015	119.90
428687	AMERICAN ACADEMY ~ GRADUATION	11/23/2015	24,495.00
428688	AMERICAN FLOORS & BLINDS	11/23/2015	56.22
428689	AMERICAN RED CROSS	11/23/2015	810.40
428690	AMERICAN SPRINKLER CORP	11/23/2015	1,368.75
428691	AMERICAN TIME AND SIGNAL CO	11/23/2015	2,391.67
428692	ANIXTER INC	11/23/2015	310.85
428693	APPLY A LINE INC	11/23/2015	142.50
428694	ARAMARK UNIFORM SERVICES	11/23/2015	113.04
428695	ARCHER PH D, ANITA	11/23/2015	3,726.61
428696	AUBURN MOUNTAINVIEW H S	11/23/2015	2,013.00
428697	AUBURN RIVERSIDE H S	11/23/2015	425.00
428698	AUBURN YOUTH RESOURCES INC	11/23/2015	8,555.00

Check Nbr	Vendor Name	Check Date	Check Amount
428699	AUTOMATIONDIRECT.COM INC	11/23/2015	782.50
428700	AVANT ASSESSMENT LLC	11/23/2015	925.00
428701	BARGREEN ELLINGSON INC	11/23/2015	27.38
428702	BINDER PRODUCTS INC	11/23/2015	164.25
428703	BIRTH TO THREE DEVELOPMENTAL C	11/23/2015	36,480.00
428704	BLUMENTHAL UNIFORMS & EQUIPMEN	11/23/2015	90.28
428705	BRAINPOP	11/23/2015	2,095.00
428706	BUDGET OFFICE PRODUCTS LLC	11/23/2015	2,748.13
428707	CAMBIUM LEARNING/ SOPRIS WEST	11/23/2015	432.42
428708	CASCADE BEAUTY COLLEGE	11/23/2015	1,179.06
428709	CASCIO INTERSTATE MUSIC	11/23/2015	185.38
428710	CASE PARTS COMPANY	11/23/2015	480.02
428711	CASTLE, KYRA	11/23/2015	10.00
428712	Vendor Continued Check	11/23/2015	0.00
428713	CDW GOVERNMENT INC	11/23/2015	859.08
428714	CHILDRENS THERAPY CENTER	11/23/2015	20,672.00
428715	CITY OF PACIFIC	11/23/2015	1,924.29
428716	COASTAL FARM & RANCH	11/23/2015	15.30
428717	COASTWIDE LABORATORIES	11/23/2015	30,852.87
428718	COLE INDUSTRIAL INC	11/23/2015	723.25
428719	Vendor Continued Check	11/23/2015	0.00
428720	CONSOLIDATED ELECTRICAL DIST I	11/23/2015	1,597.17
428721	COOPER, DOUG	11/23/2015	81.50
428722	COZART, JAN	11/23/2015	30.00
428723	Vendor Continued Check	11/23/2015	0.00

Check Nbr	Vendor Name	Check Date	Check Amount
428724	CUMMINS INC	11/23/2015	542.32
428725	Vendor Continued Check	11/23/2015	0.00
428726	Vendor Continued Check	11/23/2015	0.00
428727	DAIRY FRESH FARMS INC	11/23/2015	39,704.57
428728	DELL MARKETING LP % DELL USA L	11/23/2015	10.94
428729	DEPT OF ENTERPRISE SERVICES	11/23/2015	225.00
428730	Vendor Continued Check	11/23/2015	0.00
428731	Vendor Continued Check	11/23/2015	0.00
428732	Vendor Continued Check	11/23/2015	0.00
428733	Vendor Continued Check	11/23/2015	0.00
428734	DIDAX INC	11/23/2015	26,727.25
428735	DRUG FREE BUSINESS	11/23/2015	322.00
428736	Vendor Continued Check	11/23/2015	0.00
428737	Vendor Continued Check	11/23/2015	0.00
428738	Vendor Continued Check	11/23/2015	0.00
428739	DYNAMIC LANGUAGE CENTER INC	11/23/2015	3,672.57
428740	EBIX INC	11/23/2015	2,179.05
428741	EDUCATIONAL TESTING SERVICE IN	11/23/2015	550.00
428742	EDULAUNCH.COM	11/23/2015	750.00
428743	EK BEVERAGE COMPANY	11/23/2015	1,501.80
428744	ELECTROCOM	11/23/2015	2,121.56
428745	EQUIPMENT SALES COMPANY	11/23/2015	588.02
428746	Vendor Continued Check	11/23/2015	0.00
428747	Vendor Continued Check	11/23/2015	0.00
428748	FERGUSON ENTERPRISES INC #3007	11/23/2015	1,833.30

Check Nbr	Vendor Name	Check Date	Check Amount
428749	GLM CHARTER BUS SERVICE	11/23/2015	1,417.00
428750	GOODY MAN DISTRIBUTING INC	11/23/2015	2,647.46
428751	GRAINGER DEPT 810392688	11/23/2015	31.39
428752	GUARDIAN SECURITY SYSTEMS INC	11/23/2015	1,442.00
428753	GUERRERO, CRYSTAL E	11/23/2015	5.00
428754	HAAN CRAFTS LLC	11/23/2015	7.25
428755	HAMMOND ASHLEY VIOLINS	11/23/2015	2,748.45
428756	HEALTH CARE AUTHORITY	11/23/2015	50,823.72
428757	HEALTH VENTURE	11/23/2015	1,968.75
428758	HENDERSON, ALEMETIA R	11/23/2015	71.88
428759	HENDRICKSON ASSOCIATES LLC	11/23/2015	2,163.72
428760	HOUGHTON MIFFLIN HARCOURT	11/23/2015	2,914.46
428761	JOHNSON, KELLIE	11/23/2015	28.25
428762	JOSTENS INC	11/23/2015	53.55
428763	JOSTENS INC	11/23/2015	16.41
428764	JW PEPPER & SON INC	11/23/2015	347.13
428765	KDL HARDWARE SUPPLY INC	11/23/2015	569.36
428766	KING COUNTY DIRECTORS ASSN	11/23/2015	7,393.44
428767	KONICA MINOLTA BUSINESS SOLUTI	11/23/2015	4,108.77
428768	LAFFERTY, JADEN-CURTIS WILLIAM	11/23/2015	20.99
428769	LAKE RETREAT CAMP & CONF CTR	11/23/2015	1,884.00
428770	LANGUAGE TESTING INTERNATIONAL	11/23/2015	15.00
428771	LAWRENCE, YVONNE LYNN	11/23/2015	115.00
428772	LEASE, LISA	11/23/2015	23.00
428773	LONG BUILDING TECHNOLOGIES	11/23/2015	1,835.50

Check Nbr	Vendor Name	Check Date	Check Amount
428774	Vendor Continued Check	11/23/2015	0.00
428775	M ROSE ENTERPRISES DBA	11/23/2015	610.67
428776	MAPLES, TERESA A	11/23/2015	600.00
428777	MARNEY, KIMBERLY D	11/23/2015	5.00
428778	MAXIM STAFFING SOLUTIONS	11/23/2015	7,849.85
428779	MICONTROLS INC	11/23/2015	3,751.65
428780	MICRO COMPUTER SYSTEMS INC	11/23/2015	605.54
428781	MIDCO MATERIAL HANDLING INC	11/23/2015	399.96
428782	MSC INDUSTRIAL SUPPLY CO	11/23/2015	818.73
428783	MUSIC & ARTS CENTER	11/23/2015	63.79
428784	NELSON TRUCK EQUIPMENT CO INC	11/23/2015	169.73
428785	NOETIC HEALTH LLC	11/23/2015	14,250.00
428786	NW SCHOOL FOR DEAF & HARD OF H	11/23/2015	7,720.00
428787	NW TEXTBOOK DEPOSITORY	11/23/2015	376.35
428788	OETC	11/23/2015	154.30
428789	ORCA PACIFIC INC	11/23/2015	1,033.50
428790	OSPI AGENCY ACCOUNTING	11/23/2015	9,600.00
428791	OUTPATIENT PHYSICAL THERAPY &	11/23/2015	3,444.00
428792	PACIFIC BOAT TOPS & UPHOLSTERY	11/23/2015	520.13
428793	PACIFIC INTERPRETERS INC	11/23/2015	1,303.26
428794	PATTERSON BUCHANAN FOBES & LEI	11/23/2015	4,900.00
428795	PEARSON EDUCATION INC	11/23/2015	4,933.11
428796	PETRO CARD	11/23/2015	20,851.53
428797	PHONAK LLC	11/23/2015	806.00
428798	PIONEER ELEM	11/23/2015	474.00

Check Nbr	Vendor Name	Check Date	Check Amount
428799	PLUMMASTER INC	11/23/2015	810.30
428800	PROCARE THERAPY INC	11/23/2015	4,414.50
428801	PROGRESSUS THERAPY INC	11/23/2015	12,140.10
428802	PUGET SOUND ENERGY ELECTRIC	11/23/2015	47,107.02
428803	Vendor Continued Check	11/23/2015	0.00
428804	PUGET SOUND ENERGY NAT GAS	11/23/2015	15,878.59
428805	PUGET SOUND EDUCATIONAL SERVIC	11/23/2015	40,800.00
428806	REXEL INC	11/23/2015	1,194.63
428807	RODDA PAINT CO	11/23/2015	60.13
428808	RWC INTERNATIONAL LTD INC	11/23/2015	126.56
428809	SANDLAND PROMOTIONS	11/23/2015	977.84
428810	SCHETKY NW SALES INC	11/23/2015	2,002.99
428811	SCHRAMA, PATRICE	11/23/2015	5.00
428812	SEATTLE TIMES	11/23/2015	414.30
428813	SHRED IT USA LLC	11/23/2015	559.75
428814	SIMON, TIER E	11/23/2015	172.62
428815	SKELLEY PIANO	11/23/2015	935.00
428816	SMARSH INC	11/23/2015	350.00
428817	SMITH, LORIE	11/23/2015	46.50
428818	SOLIANI HEALTH	11/23/2015	9,750.00
428819	SONITROL PACIFIC	11/23/2015	237.00
428820	SOPHUS HEALTH CARE INC	11/23/2015	1,660.50
428821	SOUND PUBLISHING INC	11/23/2015	82.88
428822	SPEEDY AUTO GLASS INC	11/23/2015	273.75
428823	STANLEY CONVERGENT SECURITY SO	11/23/2015	845.23

Check Nbr	Vendor Name	Check Date	Check Amount
428824	STAR RENTALS	11/23/2015	426.61
428825	STEWART, ANDREA LEE	11/23/2015	240.19
428826	SUPERIOR HVAC AND ELECTRICAL	11/23/2015	560.92
428827	SUPPLEMENTAL HEALTH CARE	11/23/2015	5,250.00
428828	TACOMA PIERCE CO VOLLEYBALL	11/23/2015	2,227.50
428829	TED BROWN MUSIC COMPANY	11/23/2015	164.04
428830	TELDATA SYSTEMS INC	11/23/2015	1,500.15
428831	THEMES AND VARIATIONS	11/23/2015	414.50
428832	TIME EQUIPMENT COMPANY	11/23/2015	699.81
428833	TOTAL FILTRATION SERVICES, INC	11/23/2015	529.41
428834	UNIFIRST CORPORATION	11/23/2015	664.58
428835	UNIVERSAL LANGUAGE SERVICE INC	11/23/2015	454.20
428836	USA MOBILITY WIRELESS INC	11/23/2015	353.44
428837	VALLEY COMMUNICATIONS CENTER	11/23/2015	120.00
428838	WALMART SAMS CLUB	11/23/2015	344.99
428839	WASH TRACTOR INC	11/23/2015	200.68
428840	WESTERN MECHANICAL CONTRACTORS	11/23/2015	1,311.81
428841	WHEELER, CONNIE	11/23/2015	107.00
428842	WORLD LANGUAGE SERVICES LLC	11/23/2015	439.20
428843	WOWZERS LLC	11/23/2015	357.00
428844	WSIPC NW ESD FISCAL AGENT	11/23/2015	23,959.17
428845	BARCLAY DEAN ARCHITECTURAL PRO	11/23/2015	2,551.35
428846	BARGREEN ELLINGSON INC	11/23/2015	281.14
428847	C N R INC	11/23/2015	4,859.23
428848	CUSTOM ELECTRIC & CONTROLS	11/23/2015	2,643.33



Check Nbr	Vendor Name	Check Date	Check Amount
428849	DELL MARKETING LP % DELL USA L	11/23/2015	34,596.05
428850	EMERSON, LEO S	11/23/2015	7,200.00
428851	GOVCONNECTION INC	11/23/2015	419.69
428852	GREAT FLOORS	11/23/2015	33,834.49
428853	INSLEE BEST DOEZIE & RYDER PS	11/23/2015	534.00
428854	KING COUNTY DIRECTORS ASSN	11/23/2015	569.84
428855	MICRO COMPUTER SYSTEMS INC	11/23/2015	353,459.96
428856	OETC	11/23/2015	3,893.40
428857	PAC VAN INC	11/23/2015	304.14
428858	SHANNON & WILSON INC	11/23/2015	715.00
428859	SMITH & GREENE COMPANY	11/23/2015	657.00
428860	A G WEST BLACK HILLS HIGH SCHO	11/23/2015	75.00
428861	AAA WASHINGTON	11/23/2015	80.15
428862	AUBURN RIVERSIDE H S BAND PARE	11/23/2015	275.00
428863	BEICHLEY, DAVID	11/23/2015	33.00
428864	BLUBAUGH, MICHELLE	11/23/2015	33.00
428865	BRANDING INNOVATIONS INC	11/23/2015	354.11
428866	BROWN, AMANDA MARIA	11/23/2015	33.00
428867	CHAMBERS, JENNIFER ELAINE	11/23/2015	33.00
428868	COSTCO	11/23/2015	2,237.22
428869	DEWEY, VANESSA	11/23/2015	33.00
428870	DK CUSTOM INK	11/23/2015	416.50
428871	Vendor Continued Check	11/23/2015	0.00
428872	EASTBAY INC	11/23/2015	5,904.37
428873	EK BEVERAGE COMPANY	11/23/2015	1,394.99

Check Nbr	Vendor Name	Check Date	Check Amount
428874	GIG HARBOR HIGH SCHOOL	11/23/2015	119.00
428875	GOSNEY MOTOR PARTS INC	11/23/2015	125.06
428876	HARRIS, MATTHEW SKYE	11/23/2015	75.53
428877	HUNT, MARIA	11/23/2015	24.00
428878	IMAGE MASTERS INC	11/23/2015	148.92
428879	JACOBSON, PATRICIA	11/23/2015	33.00
428880	JEZEK, JOEL	11/23/2015	33.00
428881	JOURNALISM EDUCATION ASSOCIATI	11/23/2015	100.00
428882	K D GRAZIE INC	11/23/2015	450.00
428883	LIDS TEAM SPORTS	11/23/2015	3,958.48
428884	MCABEE, CHERISH JEAN	11/23/2015	62.00
428885	MICHAELO ESPRESSO INC	11/23/2015	86.51
428886	NW FUNDRAISING	11/23/2015	10,014.00
428887	OLSON, KEVIN L	11/23/2015	43.71
428888	PACIFIC WELDING SUPPLIES	11/23/2015	24.09
428889	PRAXAIR DISTRIBUTION INC	11/23/2015	115.38
428890	R & H THEATRICALS	11/23/2015	2,818.50
428891	RHOADES, STEVE	11/23/2015	47.45
428892	RINGER, SANDY	11/23/2015	250.00
428893	SKILLSUSA WASHINGTON	11/23/2015	80.00
428894	SPECIALTY FROZEN DISTIBUTING	11/23/2015	1,000.00
428895	STAPLES ADVANTAGE	11/23/2015	9.25
428896	STRATTON, ERIC	11/23/2015	33.00
428897	STREETMAN, APRIL	11/23/2015	33.00
428898	STUDENT SUPPLY COMPANY	11/23/2015	233.69

Check Nbr	Vendor Name	Check Date	Check Amount
428899	TAYLOR PUBLISHING COMPANY	11/23/2015	7,000.00
428900	TD SPORTSWEAR	11/23/2015	902.56
428901	TEAM 1ST CUSTOM SOCKS	11/23/2015	810.74
428902	UNIFIED SHITO-RYU ACADEMY	11/23/2015	100.00
428903	VARSITY BRANDS	11/23/2015	8,611.04
428904	WALMART SAMS CLUB	11/23/2015	245.63
428905	WASH ASSN OF SCHOOL BUSINESS O	11/23/2015	600.00
428906	WASH FLORAL SERVICE INC	11/23/2015	17.39
428907	WEST COAST AWARDS & ATHLETICS	11/23/2015	262.80
428908	WINNING SEASONS	11/23/2015	782.65
428909	WOLFORD, TODD	11/23/2015	33.00
428910	AUBURN RIVERSIDE H S	11/23/2015	257.00
428911	Vendor Continued Check	11/23/2015	0.00
428912	Vendor Continued Check	11/23/2015	0.00
428913	Vendor Continued Check	11/23/2015	0.00
428914	Vendor Continued Check	11/23/2015	0.00
428915	Vendor Continued Check	11/23/2015	0.00
428916	AUBURN SENIOR H S	11/23/2015	3,795.65
428917	CASCADE M S	11/23/2015	55.00
428918	MT BAKER M S	11/23/2015	81.00
428919	OLYMPIC M S	11/23/2015	145.00
238	Computer	Check(s) For a Total of	1,079,115.81

0	Manual	Checks For a Total of	0.00
0	Wire Transfer	Checks For a Total of	0.00
0	ACH	Checks For a Total of	0.00
238	Computer	Checks For a Total of	1,079,115.81
Total For 238	Manual, Wire Tran, ACH & Computer	Checks	1,079,115.81
Less 0	Voided	Checks For a Total of	0.00
		Net Amount	1,079,115.81

## F U N D S U M M A R Y

Fund	Description	Balance Sheet	Revenue	Expense	Total
10	General Fund	10,034.05	362.24	567,681.53	578,077.82
20	Capital Projects	-369.88	0.00	446,888.50	446,518.62
40	ASB Fund	-267.76	416.00	50,037.48	50,185.72
70	Private Purpose	0.00	0.00	4,333.65	4,333.65

The following vouchers, as audited and certified by the Auditing Officer as required by RCW 42.24.080, and those expense reimbursement claims certified as required by RCW 42.24.090, are approved for payment. Those payments have been recorded on this listing which has been made available to the board.

As of November 23, 2015, the board, by a \_\_\_\_\_ vote, approves payments, totaling \$99,243.78. The payments are further identified in this document.

Total by Payment Type for Cash Account, US Bank Wire Transfers:  
Wire Transfer Payments 201500142 through 201500165, totaling \$99,243.78

Secretary _____	Board Member _____
Board Member _____	Board Member _____
Board Member _____	Board Member _____

Check Nbr	Vendor Name	Check Date	Check Amount
201500142	STAPLES ADVANTAGE	11/23/2015	1,877.05
201500143	GOSNEY MOTOR PARTS INC	11/23/2015	2,755.25
201500144	KING COUNTY DIRECTORS ASSN	11/23/2015	8,544.42
201500152	UNITED PARCEL SERVICE	11/23/2015	77.64
201500153	LES SCHWAB TIRE CENTER	11/23/2015	10,118.34
201500154	ASPIRE FUNDRAISING ~ MIDLAND F	11/23/2015	1,397.16
201500155	JOSTENS	11/23/2015	1,752.00
201500156	SPORTS CONNECTION LLC	11/23/2015	423.61
201500157	AT & T	11/23/2015	318.57
201500158	CEDAR GROVE ORGANICS RECYCLING	11/23/2015	2,900.43
201500159	CENTURY LINK	11/23/2015	3,225.43
201500160	CITY OF AUBURN UTILITIES	11/23/2015	25,919.79
201500161	REPUBLIC SERVICES #176	11/23/2015	3,569.14
201500162	VERIZON WIRELESS	11/23/2015	287.57
201500163	WASH ASSN OF SCHOOL ADMINISTRA	11/23/2015	30,960.25
201500164	WASTE MANAGEMENT RECYCLE COMPA	11/23/2015	2,057.13
201500165	WORLDSTRIDES ONSTAGE	11/23/2015	3,060.00

Check Nbr	Vendor Name	Check Date	Check Amount
17	Wire Transfer Check(s) For a Total of		99,243.78

0	Manual	Checks For a Total of	0.00
17	Wire Transfer	Checks For a Total of	99,243.78
0	ACH	Checks For a Total of	0.00
0	Computer	Checks For a Total of	0.00
Total For 17	Manual, Wire Tran, ACH & Computer	Checks	99,243.78
Less 0	Voided	Checks For a Total of	0.00
		Net Amount	99,243.78

## F U N D S U M M A R Y

Fund	Description	Balance Sheet	Revenue	Expense	Total
10	General Fund	7,551.13	0.00	85,059.88	92,611.01
40	ASB Fund	0.00	0.00	6,632.77	6,632.77

The following vouchers, as audited and certified by the Auditing Officer as required by RCW 42.24.080, and those expense reimbursement claims certified as required by RCW 42.24.090, are approved for payment. Those payments have been recorded on this listing which has been made available to the board.

As of November 23, 2015, the board, by a \_\_\_\_\_ vote, approves payments, totaling \$214,916.98. The payments are further identified in this document.

Total by Payment Type for Cash Account, AP Direct Dep Settlement Accou:  
ACH Numbers 151600546 through 151600657, totaling \$214,916.98

Secretary _____	Board Member _____
Board Member _____	Board Member _____
Board Member _____	Board Member _____

Check Nbr	Vendor Name	Check Date	Check Amount
151600546	ALONZO, VICKI LEE	11/23/2015	209.08
151600547	BARKER, CAROL JEAN	11/23/2015	294.35
151600548	BARLOW, COLLEEN MARIE	11/23/2015	812.50
151600549	BRENNAN, TRACY L	11/23/2015	500.00
151600550	BROWN, GREGORY S	11/23/2015	243.61
151600551	BRYANT, VALERIE ELTON	11/23/2015	40.00
151600552	BURT, TIFFANY ANN	11/23/2015	58.07
151600553	CAMPBELL-AIKENS, JANIS GAIL	11/23/2015	376.24
151600554	CAMPBELL, JULIE D	11/23/2015	35.54
151600555	CAREERSTAFF UNLIMITED INC	11/23/2015	4,800.00
151600556	CARSTENS, CORRIE ANN	11/23/2015	500.00
151600557	CHAR, JAMES A	11/23/2015	235.00
151600558	CLARK, MONICA ALICIA	11/23/2015	36.40
151600559	CLOUSER, JENNIFER LYNN	11/23/2015	15.64
151600560	CONNORS, LISA	11/23/2015	650.00
151600561	COWAN, AARON ROBERT-JOHN	11/23/2015	500.00
151600562	DAMMEL, TROY W	11/23/2015	16.10



Check Nbr	Vendor Name	Check Date	Check Amount
151600563	DAVIS, MARY KATHERYN	11/23/2015	428.16
151600564	DOWDEN HUGHES, SHERITH L	11/23/2015	94.70
151600565	FAWVER, RICHARD ALLEN	11/23/2015	16.79
151600566	FOOD SERVICES OF AMERICA **	11/23/2015	4,808.51
151600567	Vendor Continued Check	11/23/2015	0.00
151600568	Vendor Continued Check	11/23/2015	0.00
151600569	FOOD SERVICES OF AMERICA ***	11/23/2015	18,478.53
151600570	FULTON, TARA NICOLE	11/23/2015	25.30
151600571	GATES, TAMARA	11/23/2015	156.43
151600572	GERVIN-GILLYARD, MARCIA LYNN	11/23/2015	1,277.40
151600573	GIBSON-MYERS, ELIZABETH ANN	11/23/2015	74.87
151600574	GRENTZ, SUSAN CHRISTINE	11/23/2015	7.19
151600575	GRIMM, DEAN LAIN	11/23/2015	26.39
151600576	GRISIM, CHARLENE ANNE	11/23/2015	13.94
151600577	GUEST, JOANNA LYNN	11/23/2015	1,435.31
151600578	GUEST, MICHAELA DAWN	11/23/2015	66.36
151600579	HALL, SHEILA M	11/23/2015	50.00
151600580	HARMAN, EMILY NICHOLE	11/23/2015	16.10
151600581	HARRIS, HEIDI NIKOE	11/23/2015	1,000.00
151600582	HARRIS, JANET MARIE	11/23/2015	269.10
151600583	HILLS, CHELSEA ANNE	11/23/2015	133.48
151600584	HOGG, ELAINE M	11/23/2015	36.25
151600585	HOKSBERGEN, MARILYN J	11/23/2015	6.10
151600586	HUYLAR, MICHAEL TODD	11/23/2015	6.00
151600587	JACOBSMA, AMANDA CHRISTINE	11/23/2015	561.76

Check Nbr	Vendor Name	Check Date	Check Amount
151600588	JELVIK, KRISTINA LAURENE	11/23/2015	500.00
151600589	KIILSGAARD, LESLIE LOUISE	11/23/2015	141.03
151600590	KILLETT, CASEY ANN	11/23/2015	190.00
151600591	KIM, MIRA	11/23/2015	26.34
151600592	LAFAYETTE, MELISSA MARIE	11/23/2015	500.00
151600593	LAM, TAN VAN	11/23/2015	21.74
151600594	LASKEY, SAMANTHA MEHAFFEY	11/23/2015	46.41
151600595	LEWIS, BRENDA MARIE	11/23/2015	500.00
151600596	LEWIS, JENNIFER LYNN	11/23/2015	118.59
151600597	LINDELL, ELENA	11/23/2015	51.87
151600598	MATTOX, KIMBERLI CHAROLETTE	11/23/2015	50.00
151600599	MAYER, MARGARET S	11/23/2015	126.73
151600600	MCGAUGHEY, DEBORA K	11/23/2015	87.59
151600601	MILLICAN, KARRI ELIZABETH	11/23/2015	10.00
151600602	MOONEY, KATHLEEN M	11/23/2015	109.35
151600603	MULICK, PATRICK JAMES	11/23/2015	103.33
151600604	MURPHY, JENNIFER A	11/23/2015	27.54
151600605	NAWAZ, RIZWANA SHAH	11/23/2015	50.00
151600606	NEWCOMB, AKIKO NITTA	11/23/2015	11.16
151600607	NICKEL, LISA A	11/23/2015	94.30
151600608	OLSON, JILL MARIE	11/23/2015	47.01
151600609	OLVER, CATHERINE ELAINE	11/23/2015	230.23
151600610	RODRIGUEZ, JESSE ANN	11/23/2015	79.00
151600611	ROY, MATTHEW J	11/23/2015	126.81
151600612	RUPP, TERI KAYE	11/23/2015	30.94

Check Nbr	Vendor Name	Check Date	Check Amount
151600613	RYAN, KEEGAN LYNN	11/23/2015	500.00
151600614	SAXON, JAN K	11/23/2015	12.82
151600615	SHU-MINUTOLI, KAREN	11/23/2015	81.65
151600616	SLATER, ROBIN SHANTELLE	11/23/2015	20.14
151600617	STAFFORD, DAVID LEE	11/23/2015	46.58
151600618	STENSON, RIKKI	11/23/2015	98.31
151600619	SUKERT, CARRIE MICHELLE	11/23/2015	500.00
151600620	SUNBELT STAFFING LLC	11/23/2015	13,802.50
151600621	SWANSON, DARLENE RENEE	11/23/2015	500.00
151600622	SWANSON, PENNI J	11/23/2015	20.70
151600623	SWENDDAL-WHITE, KAISA	11/23/2015	40.00
151600624	TELFORD, CHRISTOPHER G	11/23/2015	35.00
151600625	THOMAS, JULIA NICOLE	11/23/2015	400.00
151600626	TURNER, MEGAN DENISE	11/23/2015	13.69
151600627	Vendor Continued Check	11/23/2015	0.00
151600628	US BANK CORP PROCUREMENT CARD	11/23/2015	55,866.58
151600629	US BANK CORP TRAVEL PAYMENT	11/23/2015	5,316.33
151600630	US BANK CTE P CARDS	11/23/2015	8,391.31
151600631	WAGNER, VICKI	11/23/2015	456.50
151600632	WHARTON, MELINDA ANN	11/23/2015	111.00
151600633	WRIGHT, SHELLEY VERENE	11/23/2015	495.64
151600634	WRIGHT, TIMOTHY A	11/23/2015	40.00
151600635	YOSHINO, BRENDA ELLIOTT	11/23/2015	325.00
151600636	EDNETICS INC	11/23/2015	50,516.88
151600637	US BANK CORP PROCUREMENT CARD	11/23/2015	1,232.04

Check Nbr	Vendor Name	Check Date	Check Amount
151600638	AGNEW, CORRIE LEE LABERGE	11/23/2015	88.52
151600639	AUBURN SENIOR HIGH IMPREST	11/23/2015	975.00
151600640	BENEDICT, MERI MUIRHEAD	11/23/2015	97.51
151600641	CARRIZOSA, CARLA	11/23/2015	38.24
151600642	CARTER, JEREMIAH DANIEL	11/23/2015	60.00
151600643	CONANT, CRYSTAL LAYNE	11/23/2015	48.77
151600644	Vendor Continued Check	11/23/2015	0.00
151600645	FOOD SERVICES OF AMERICA	11/23/2015	4,265.85
151600646	MCGUFFIN, JAY RANDALL	11/23/2015	226.09
151600647	SANDLAND, GINA M	11/23/2015	246.45
151600648	SLATER, ROBIN SHANTELLE	11/23/2015	45.19
151600649	STAFFORD, DAVID LEE	11/23/2015	586.96
151600650	SWANSON, PENNI J	11/23/2015	48.80
151600651	THOMAS, JANA DARLENE	11/23/2015	76.06
151600652	Vendor Continued Check	11/23/2015	0.00
151600653	US BANK CORP PROCUREMENT CARD	11/23/2015	22,196.84
151600654	US BANK CORP TRAVEL PAYMENT	11/23/2015	5,351.66
151600655	WATKINS, KANIKA LEWELYN	11/23/2015	43.44
151600656	WILKINSON, LISA M	11/23/2015	39.29
151600657	WRIGHT, TIMOTHY A	11/23/2015	68.47

112 ACH

Check(s) For a Total of

214,916.98

0	Manual	Checks For a Total of	0.00
0	Wire Transfer	Checks For a Total of	0.00
112	ACH	Checks For a Total of	214,916.98
0	Computer	Checks For a Total of	0.00
Total For 112	Manual, Wire Tran, ACH & Computer Checks		214,916.98
Less 0	Voided	Checks For a Total of	0.00
	Net Amount		214,916.98

## F U N D S U M M A R Y

Fund	Description	Balance Sheet	Revenue	Expense	Total
10	General Fund	587.11	0.00	128,077.81	128,664.92
20	Capital Projects	0.00	0.00	51,748.92	51,748.92
40	ASB Fund	-779.49	0.00	35,282.63	34,503.14

AUBURN SCHOOL DISTRICT NO. 408

FINANCIAL STATEMENTS  
FOR  
OCTOBER 2015

AUBURN SCHOOL DISTRICT NO. 408  
MONTHLY FINANCIAL REPORTS  
TABLE OF CONTENTS

- I. Combined Balance Sheet
  - A. Governmental Funds
  - B. Trust Funds and Account Groups
- II. Budget Status Reports
  - A. General Fund
  - B. Transportation Vehicle Fund
  - C. Capital Projects Fund
  - D. Debt Service Fund
  - E. ASB Fund
    - 1. High Schools
    - 2. Middle Schools
- III. Private Purpose Trust Fund Statement
- IV. NBN Employee Benefits Trust Fund Statement
- V. Local Grants

**AUBURN SCHOOL DISTRICT NO. 408**  
**BALANCE SHEETS - GOVERNMENTAL FUNDS**  
**October 31, 2015**

	GENERAL	TRANSPORT VEHICLE	CAPITAL PROJECTS	DEBT SERVICE	ASB
<b>ASSETS</b>					
Cash and cash equivalents	20,053,389	2,069,343	45,239,580	11,313,906	1,864,521
Restricted Cash	25,544	3,164	110,979	34,258	4,999
Property taxes receivable	2,617,221	-40	565,440	1,013,822	
Accounts receivable	825,693				0
Interest receivable	0	0	-2,357	0	0
Due from other funds	-1,178	0	0	0	0
Due from other governments	0		298,238		
Inventory of supplies	424,601				
Prepays	0				0
Total Assets	23,945,271	2,072,467	46,211,880	12,361,987	1,869,520
<b>LIABILITIES and EQUITY</b>					
Liabilities:					
Accounts payable	2,060,070		0		15,468
Estimated Unemployment Payable	26,506				
Due to other governments	10,225	1,265	247	13,710	2,001
Due to other funds	0		44,376		-1,178
Deferred revenue	2,617,221	-40	570,037	1,013,822	0
Total Liabilities	4,714,022	1,225	614,660	1,027,533	16,291
Equity:					
Non Spendable Fund Bal--Inven	549,946				
Restricted for Food Services	2,115,257				
Restricted from Bond Proceeds			13,972,980		
Restricted from Levy Proceeds			-1,375,131		
Restricted from Impact Fees			243,630		
Restricted for Fund Purpose		2,070,231			1,853,229
Restricted to Debt Service				1,655,164	
Assigned to Contingencies	300,000				
Assigned to Other Purposes	1,800,000				
Assigned To Fund Purposes		1,011	32,755,741	9,679,291	
Unassigned Fund Balance	14,466,046				
Total Equity	19,231,249	2,071,242	45,597,220	11,334,454	1,853,229
Total Liabilities and Equity	23,945,271	2,072,467	46,211,880	12,361,987	1,869,520



**AUBURN SCHOOL DISTRICT NO. 408**  
**BALANCE SHEETS - TRUST FUNDS AND ACCOUNT GROUPS**  
**October 31, 2015**

	TRUST FUNDS		ACCOUNT GROUPS	
	PRIV PURP TRUST	NBN EMPLOY BENEFITS	GENERAL FIXED ASSETS	GENERAL LONG-TERM DEBT
<b>ASSETS</b>				
Cash and cash equivalents	559,190	155,000		
Restricted Cash	2,413	707		
Due From Other Funds	0	0		
Accounts receivable				
Interest receivable	0	0		
Fixed assets			276,544,570	
Other debits:				
Amount available in Debt Service Fund				11,334,454
Amount to be provided for retirement of general long-term obligations				113,724,584
Total Assets	561,603	155,707	276,544,570	125,059,038
<b>LIABILITIES and EQUITY</b>				
Liabilities:				
Accounts Payable	0	12,904		
Compensated absences payable				2,939,038
Due to other governments	965	283		
Due To Other Funds		0		
General obligation bonds payable				122,120,000
Total Liabilities	965	13,187	0	125,059,038
Equity:				
Investment in general fixed assets			276,544,570	
Fund balances:				
Assigned To Fund Purposes	560,638	142,520		
Total Equity	560,638	142,520	276,544,570	0
Total Liabilities and Equity	561,603	155,707	276,544,570	125,059,038

<p align="center">Auburn School District No. 408 General Fund Budget Status Summary</p>	
---	--

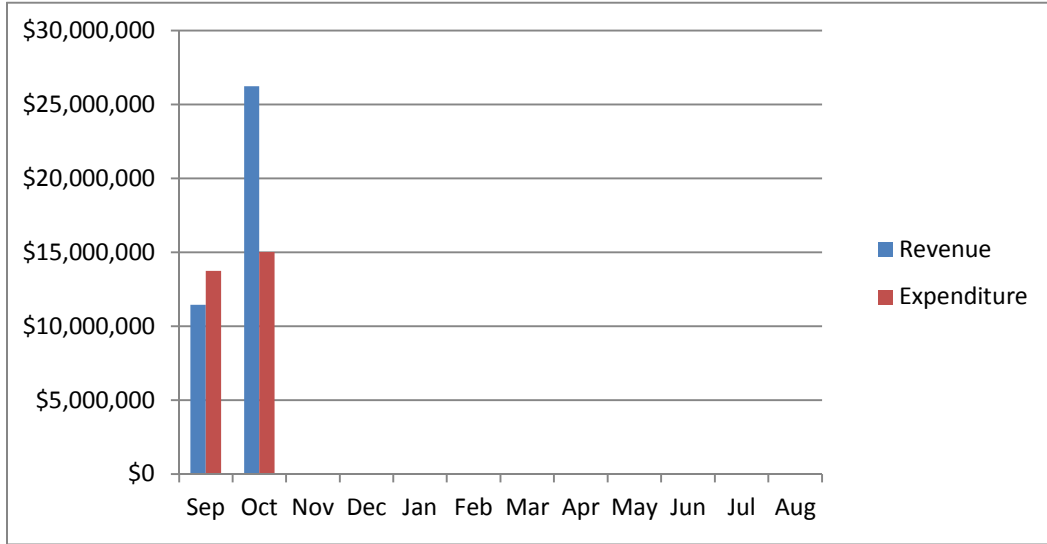
	REVENUE			EXPENDITURES			FUND BALANCE
Fiscal Year	Average	Actual	Actual	Average	Actual	Monthly	Beginning
2014 - 15	Cum %	Cum %	Monthly	Cum %	Cum %**	Amount	9,416,432
September	5.64%	5.63%	9,600,271	6.59%	11.23%	11,493,198	7,523,505
October	19.96%	19.93%	24,381,007	14.62%	18.99%	13,998,540	17,905,973
November	27.27%	26.57%	12,457,337	22.71%	26.78%	14,097,667	15,140,231
December	33.90%	33.18%	11,280,745	30.57%	34.44%	13,715,438	12,705,623
January	40.39%	39.91%	11,049,790	38.24%	42.20%	13,366,760	10,814,353
February	46.91%	46.82%	11,114,885	46.01%	49.17%	13,541,044	8,936,027
March	54.03%	54.20%	12,123,196	54.11%	54.11%	14,124,959	7,367,771
April	68.71%	69.23%	24,991,693	62.38%	64.91%	14,418,327	18,551,214
May	76.52%	77.04%	13,295,630	70.27%	72.61%	13,753,159	18,093,684
June	81.15%	81.97%	7,883,016	78.32%	80.67%	14,037,824	12,442,773
July	88.71%	89.74%	12,879,517	86.60%	88.58%	14,437,607	11,242,453
August	98.02%	99.05%	15,843,044	96.23%	96.22%	16,779,340	10,306,157
			Revenue			Expenditure	Fund Balance
Anticipated - First Budget			170,274,046			174,344,494	5,962,883
Actual - At Fiscal Year End			168,650,646			167,760,921	10,306,157
** Includes encumbrances.							

	REVENUE			EXPENDITURES			FUND BALANCE
Fiscal Year	Average	Actual	Actual	Average	Actual	Monthly	Beginning
2013-14	Cum %	Cum %	Monthly	Cum %	Cum %**	Amount	10,133,329
September	6.76%	6.51%	9,950,137	11.19%	11.15%	11,113,769	8,969,697
October	19.63%	20.36%	21,159,285	19.66%	19.15%	13,247,446	16,881,536
November	26.73%	27.23%	10,494,071	27.00%	26.90%	12,563,614	14,811,993
December	34.26%	34.39%	10,933,571	34.53%	34.40%	12,617,333	13,128,231
January	41.53%	41.28%	10,526,689	42.31%	41.97%	12,539,519	11,115,401
February	48.89%	48.60%	11,182,251	50.04%	49.91%	12,981,238	9,316,414
March	56.54%	56.29%	11,749,451	57.80%	57.60%	12,820,932	8,244,933
April	70.37%	71.31%	22,945,138	66.38%	65.65%	13,411,868	17,778,203
May	78.49%	79.14%	11,965,259	74.16%	73.50%	13,119,004	16,624,458
June	83.94%	84.41%	8,057,108	81.77%	82.10%	13,808,972	10,872,594
July	91.49%	92.10%	11,749,445	89.63%	90.25%	13,713,359	8,908,680
August	100.07%	101.48%	14,319,827	97.25%	98.14%	14,002,912	9,225,640
			Revenue			Expenditure	Fund Balance
Anticipated - First Budget			152,776,040			158,891,993	4,808,633
Actual - At Fiscal Year End			155,029,778			155,939,966	9,416,432

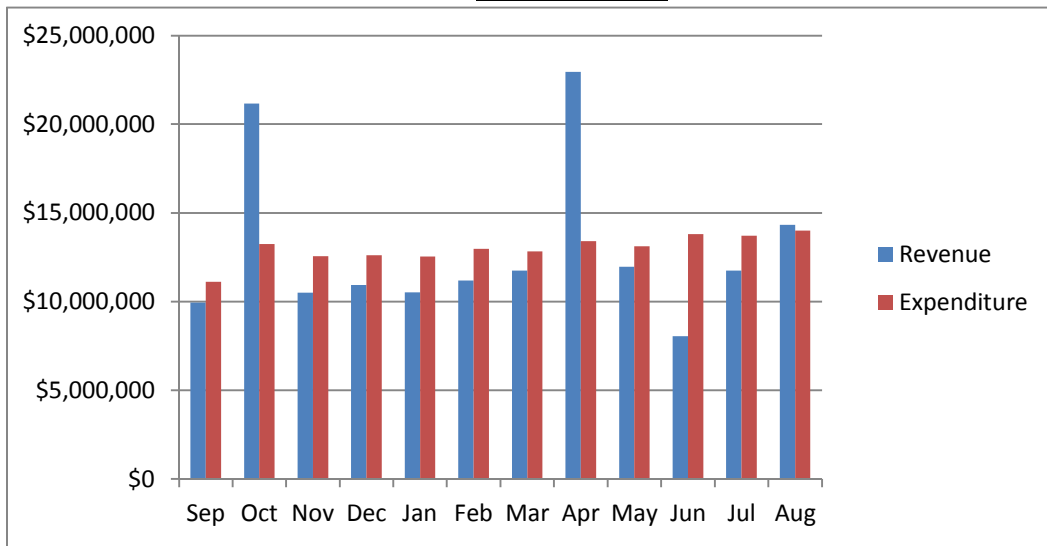
\*\* Includes encumbrances.

# AUBURN SCHOOL DISTRICT No. 408 GENERAL FUND

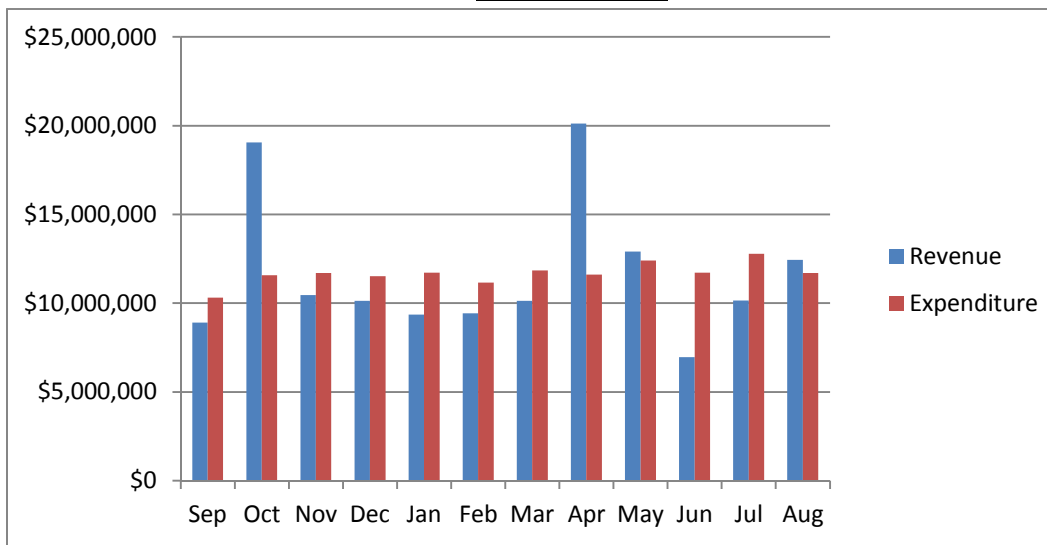
2015 - 16



2014 - 15



2013 - 14



**Auburn School District No. 408**  
**General Fund Budget Status**  
**For the Month of October, 2015**

	Annual Budget	Actual For Month	Total For Year	Encumbrance	Balance	Percent
TOTAL BEGINNING FUND BALANCE	\$ 10,000,000		10,310,508			
REVENUES AND OTHER FINANCING SOURCES						
1000 Local Taxes	38,375,108	13,291,950	13,955,901		24,419,207	36.37%
2000 Local Non-Tax	9,044,074	277,261	590,197		8,453,877	6.53%
3000 State, General Purpose	102,804,458	8,993,843	17,512,514		85,291,944	17.03%
4000 State, Special Purpose	24,208,994	2,166,526	4,304,029		19,904,965	17.78%
5000 Federal, General Purpose	8,383	-	-		8,383	0.00%
6000 Federal, Special Purpose	16,671,208	1,431,484	1,241,870		15,429,338	7.45%
7000 Revenues from Other District	500,000	-	-		500,000	0.00%
8000 Revenues from Other Agencies	102,700	61,500	61,500		41,200	59.88%
9000 Other Financing Sources	-	1,702	1,702		(1,702)	0.00%
Total Revenues & Other Finance Sources	191,714,925	26,224,267	37,667,713	-	154,047,212	19.65%
EXPENDITURES						
00 Regular Instruction	110,703,297	8,870,569	17,442,261	78,203,645	15,057,392	86.40%
10 Federal Stimulus	867,816	1,778	1,917	129,466	736,433	15.14%
20 Special Ed Instruction	22,297,590	1,833,030	3,393,604	17,339,621	1,564,365	92.98%
30 Vocational Instruction	7,079,456	602,538	1,068,181	5,198,136	813,140	88.51%
50&60 Compensatory Education	14,790,876	919,248	1,669,416	7,817,580	5,303,880	64.14%
70 Other Instructional Pgms	3,219,040	78,467	140,289	426,937	2,651,814	17.62%
80 Community Services	1,357,047	81,026	130,640	426,071	800,336	41.02%
90 Support Services	34,872,025	2,636,736	4,900,666	21,386,005	8,585,354	75.38%
Total Expenditures	195,187,147	15,023,392	28,746,972	130,927,460	35,512,714	81.81%
Excess Revenues/Other Financing Sources						
Over (under) Expend & Oth Financing Uses	(3,472,222)	11,200,874	8,920,741			
Total Ending Fund Balance	\$ 6,527,778		19,231,249			
Ending Fund Balance Accounts						
GL 821 Restricted for Carryovers						
GL 828 Restricted for Food Services	-		2,115,257			
GL 840 Nonspendable Fund Bal - Inv	-		549,946			
GL 875 Unrsrvd Dsgntd-Conting	-		300,000			
GL 888 Assigned to Other Purposes	-		1,800,000			
GL 890 UnRsrvd Undsgntd Fnd Bal	6,527,777		14,466,046			
Total Ending Fund Balance	\$ 6,527,777		\$ 19,231,249			
Fund Balance % of Expenditures	3%		67%			

**Auburn School District No. 408**  
**Capital Projects Fund Budget Status**  
**For the Month of October, 2015**

	Annual Budget	Actual For Month	Total For Year	Encumbrance	Balance	Percent
TOTAL BEGINNING FUND BALANCE	\$ 40,522,320		\$ 43,284,549			
REVENUES AND OTHER FINANCING SOURCES						
1000 Local Taxes	6,111,538	2,962,457	3,109,583		3,001,955	50.88%
2000 Local Non-Tax	2,034,253	81,008	287,184		1,747,069	14.12%
3000 State, General Purpose		-	-		-	0.00%
4000 State, Special Purpose	12,000,000	2,826,494	2,826,494		9,173,506	23.55%
5000 Federal, General Purpose		-	-		-	0.00%
6000 Federal, Special Purpose		-	-		-	0.00%
7000 Revenues from Other District		-	-		-	0.00%
8000 Revenues from Other Agencies		-	-		-	0.00%
9000 Other Financing Sources	-	-	-		-	0.00%
Total Revenues & Other Financing Sources	20,145,791	5,869,959	6,223,261	-	13,922,530	30.89%
EXPENDITURES						
10 Sites	-	-	-	-	-	0.00%
20 Buildings	55,299,500	3,726,885	3,769,544	2,921,840	48,608,116	12.10%
30 Equipment	3,600,000	101,274	123,897	652,859	2,823,244	21.58%
40 Energy	-	8,574	17,148	90,414	(107,562)	0.00%
50 Sales & Lease Expenditures		-	-	-	-	0.00%
60 Bond Issuance Expenditures		-	-	-	-	0.00%
90 Debt		-	-	-	-	0.00%
Total Expenditures	58,899,500	3,836,734	3,910,590	3,665,112	51,323,798	12.86%
Excess Revenues/Other Financing Sources Over (under) Expend. & Oth Financing Uses	(38,753,709)	2,033,225	2,312,671			
Total Ending Fund Balance	\$ 1,768,611		\$ 45,597,220			
Ending Fund Balance Accounts						
GL 861 Restricted from Bond Proceeds	(22,881,824)		13,972,980			
GL 862 Restricted from Levy Proceeds	10,283,350		(1,375,131)			
GL 863 Restricted from State Proceeds	400,832		-			
GL 865 Restricted from Other Proceeds	(68,000)		-			
GL 866 Restricted from Impact Fees	1,600,000		243,630			
GL 889 Assigned to Fund Purpose	12,434,253		32,755,741			
GL 890 UnRsrd Undsgntd Fnd Bal						
Total Ending Fund Balance	\$ 1,768,611		\$ 45,597,220			

**Auburn School District No. 408**  
**ASB Fund Budget Status**  
**For the Month of October, 2015**

	Annual Budget	Actual For Month	Total for Year	Encumb	Balance	Percent
TOTAL BEGINNING FUND BALANCE	\$ 1,209,158		\$ 1,455,536			
REVENUES AND OTHER FINANCING SOURCES						
1000 General Student Body	1,757,962	127,359	288,964		1,468,998	16.44%
2000 Athletics	274,070	44,238	83,130		190,940	30.33%
3000 Classes	266,435	24,896	30,280		236,155	11.36%
4000 Clubs	1,827,047	122,671	322,381		1,504,666	17.64%
6000 Private Moneys	116,070	4,893	4,956		111,114	4.27%
Total Revenues & Other Financing Sources	4,241,584	324,057	729,711	-	3,511,873	17.20%
EXPENDITURES						
1000 General Student Body	1,477,779	70,621	94,919	44,737	1,338,123	9.45%
2000 Athletics	383,523	36,268	59,708	36,126	287,689	24.99%
3000 Classes	272,824	10,358	12,799	852	259,173	5.00%
4000 Clubs	2,017,470	100,201	161,851	65,206	1,790,413	11.25%
6000 Private Moneys	104,520	2,741	2,741	-	101,779	2.62%
Total Expenditures	4,256,116	220,189	332,018	146,921	3,777,178	11.25%
Excess Revenues/Other Financing Sources Over (under) Expend. & Oth Financing Uses	(14,532)	103,868	397,693			
Total Ending Fund Balance	\$ 1,194,626		\$ 1,853,229			
Ending Fund Balance Accounts						
GL 819 Restricted for Fund Purpose	1,194,626		1,853,229			
GL840 Nonspendable-Inven/Prepaid			-			
GL 889 Assigned to Fund Purposes						
Total Ending Fund Balance	\$ 1,194,626		\$ 1,853,229			

**Auburn School District No. 408**  
**Debt Service Fund Budget Status**  
**For the Month of October, 2015**

	Annual Budget	Actual For Month	Total Year	Encumbrance	Balance	Percent
TOTAL BEGINNING FUND BALANCE	\$ 5,992,670		\$ 6,189,257			
REVENUES AND OTHER FINANCING SOURCES						
1000 Local Taxes	14,798,633	4,894,677	5,142,123		9,656,510	34.75%
2000 Local Non-Tax	60,910	3,075	3,075		57,835	5.05%
3000 State, General Purpose		-	-		-	0.00%
5000 Federal, General Purpose		-	-		-	0.00%
6000 Federal, Special Purpose		-	-		-	0.00%
9000 Other Financing Sources		-	-		-	0.00%
Total Revenues & Other Financing Sources	14,859,543	4,897,752	5,145,197		9,714,346	34.63%
EXPENDITURES						
Matured Bond Expenditures	6,535,000	-	-	-	6,535,000	0.00%
Interest on Bonds	6,572,213	-	-	-	6,572,213	0.00%
Interfund Loan Interest	-	-	-	-	-	0.00%
Bond Transfer Fees	-	-	-	-	-	0.00%
Arbitrage Rebate		-	-	-	-	0.00%
Underwriter's fees		-	-	-	-	0.00%
Total Expenditures	13,107,213	-	-	-	13,107,213	0.00%
Other Financing Uses		-	-			
Excess Revenues/Other Financing Sources Over (under) Expend. & Oth Financing Uses	1,752,330	4,897,752	5,145,197			
Total Ending Fund Balance	\$ 7,745,000		\$ 11,334,454			
Ending Fund Balance Accounts						
GL 810 Reserved For Other Items			-			
GL 830 Reserved For Debt Service	5,992,670		1,655,164			
GL 889 Assigned to Fund Purposes	1,752,330		9,679,291			
GL 890 UnRsrvd Undsgntd Fnd Bal			-			
Total Ending Fund Balance	\$ 7,745,000		\$ 11,334,454			

**Auburn School District No. 408**  
**Transportation Vehicle Fund Budget Status**  
**For the Month of October, 2015**

	Annual Budget	Actual For Month	Total For Year	Encumb	Balance	Percent
TOTAL BEGINNING FUND BALANCE	\$ 1,398,615		\$ 2,070,231			
REVENUES AND OTHER FINANCING SOURCES						
1000 Local Taxes	-	-	-		-	0.00%
2000 Local Non-Tax	10,768	1,011	1,011		9,757	9.39%
3000 State, General Purpose		-	-		-	0.00%
4000 State, Special Purpose	740,000	-	-		740,000	0.00%
5000 Federal, General Purpose		-	-		-	0.00%
8000 Revenues from Other Agencies		-	-		-	0.00%
9000 Others Financing Sources		-	-		-	0.00%
Total Revenues & Other Financing Sources	750,768	1,011	1,011	-	749,757	0.13%
EXPENDITURES						
Type 30 Equipment	1,660,000	-	-	1,329,124	330,876	80.07%
Total Expenditures	1,660,000	-	-	1,329,124	330,876	80.07%
Excess Revenues/Other Financing Sources Over (under) Expend & Oth Financing Uses	(909,232)	1,011	1,011			
Total Ending Fund Balance	\$ 489,383		\$ 2,071,242			
Ending Fund Balance Accounts						
GL 819 Restricted for Fund Purposes	1,398,615		2,070,231			
GL 889 Assigned to Special Fund Purposes	(909,232)		1,011			
GL 890 UnRsrvd Undsgntd Fnd Bal			-			
Total Ending Fund Balance	\$ 489,383		\$ 2,071,242			



**AUBURN SCHOOL DISTRICT No. 408**

**ASB FUND**

**OCTOBER, 2015**

**HIGH SCHOOLS**

	<b>Auburn High</b>	<b>Auburn Mountainview</b>	<b>Auburn Riverside</b>	<b>West Auburn</b>	<b>TOTAL</b>
	401	405	408	504	
<b>BEGINNING BALANCE</b>	<b>\$ 192,557.22</b>	<b>\$ 293,008.85</b>	<b>\$ 378,119.49</b>	<b>\$ 8,083.13</b>	<b>\$ 871,768.69</b>
<b>REVENUES</b>	<b>\$ 158,986.46</b>	<b>\$ 191,070.49</b>	<b>\$ 198,748.40</b>	<b>\$ 359.55</b>	<b>\$ 549,164.90</b>
<b>EXPENDITURES</b>					
General	\$ 24,864.96	\$ 30,261.56	\$ 24,230.56	\$ -	\$ 79,357.08
Athletics	38,124.31	3,185.52	16,431.67	-	57,741.50
Classes	3,495.69	5,817.14	3,097.31	-	12,410.14
Clubs	57,179.48	28,762.63	59,787.49	2.00	145,731.60
Private Monies	669.81	-	-	-	669.81
<b>TOTAL EXPENDITURES</b>	<b>\$ 124,334.25</b>	<b>\$ 68,026.85</b>	<b>\$ 103,547.03</b>	<b>\$ 2.00</b>	<b>\$ 295,910.13</b>
<b>TRANSFERS</b>					
General	\$ -	\$ 16,000.00	\$ 28,985.01	\$ -	\$ 44,985.01
Athletics	(1,500.00)	(16,000.00)	(28,484.27)	-	(45,984.27)
Classes	-	-	(8,000.00)	-	(8,000.00)
Clubs	1,500.00	-	7,499.26	-	8,999.26
Private Monies	-	-	-	-	-
<b>TOTAL TRANSFERS</b>	<b>\$ -</b>	<b>\$ -</b>	<b>\$ -</b>	<b>\$ -</b>	<b>\$ (0.00)</b>
<b>OVER/ (UNDER)</b>	<b>\$ 34,652.21</b>	<b>\$ 123,043.64</b>	<b>\$ 95,201.37</b>	<b>\$ 357.55</b>	<b>\$ 253,254.77</b>
<b>ENDING BALANCE</b>	<b>\$ 227,209.43</b>	<b>\$ 416,052.49</b>	<b>\$ 473,320.86</b>	<b>\$ 8,440.68</b>	<b>\$ 1,125,023.46</b>

**AUBURN SCHOOL DISTRICT No. 408**

**ASB FUND**

**OCTOBER, 2015**

**MIDDLE SCHOOLS**

	Cascade	Mt. Baker	Rainier	Olympic	TOTAL
	202	207	206	203	
<b>BEGINNING BALANCE</b>	<b>\$ 75,400.79</b>	<b>\$ 56,277.45</b>	<b>\$ 99,861.62</b>	<b>\$ 103,013.60</b>	<b>\$ 334,553.46</b>
<b>REVENUES</b>	<b>\$ 39,371.31</b>	<b>\$ 48,128.43</b>	<b>\$ 36,756.77</b>	<b>\$ 16,178.91</b>	<b>\$ 140,435.42</b>
<b>EXPENDITURES</b>					
General	\$ 2,855.76	\$ 2,700.00	\$ 4,048.70	\$ 1,725.15	\$ 11,329.61
Athletics	-	927.52	-	1,038.82	1,966.34
Classes	-	65.00	-	324.00	389.00
Clubs	569.40	6,712.41	5,281.65	262.80	12,826.26
Private Monies	-	-	-	2,070.76	2,070.76
<b>TOTAL EXPENDITURES</b>	<b>\$ 3,425.16</b>	<b>\$ 10,404.93</b>	<b>\$ 9,330.35</b>	<b>\$ 5,421.53</b>	<b>\$ 28,581.97</b>
<b>TRANSFERS</b>					
General	\$ -	\$ 6,000.00	\$ -	\$ -	\$ 6,000.00
Athletics	-	(6,000.00)	-	-	(6,000.00)
Classes	-	-	-	-	-
Clubs	-	-	-	-	-
Private Monies	-	-	-	-	-
<b>TOTAL TRANSFERS</b>	<b>\$ -</b>	<b>\$ -</b>	<b>\$ -</b>	<b>\$ -</b>	<b>\$ -</b>
<b>OVER/ (UNDER)</b>	<b>\$ 35,946.15</b>	<b>\$ 37,723.50</b>	<b>\$ 27,426.42</b>	<b>\$ 10,757.38</b>	<b>\$ 111,853.45</b>
<b>ENDING BALANCE</b>	<b>\$ 111,346.94</b>	<b>\$ 94,000.95</b>	<b>\$ 127,288.04</b>	<b>\$ 113,770.98</b>	<b>\$ 446,406.91</b>

**AUBURN SCHOOL DISTRICT NO. 408**  
**PRIVATE PURPOSE TRUST FUND STATEMENT**  
**October 31, 2015**

**REVENUES:**

InvestED	14,300
----------	--------

Scholarship Donations:

6079 AHS Alumni	1,886
6300 ROF Scholarship	214
6501 Invest Ed- AHS	3,850
6502 Invest Ed - Casc	1,330
6503 Invest Ed - Oly	1,370
6505 Invest Ed - AMHS	3,550
6520 Invest Ed - RAI	700
6521 Invest Ed - WAHS	610
6527 Invest Ed - MTB	800
6528 Invest Ed - ARHS	2,090
7005 AHS Booster Club	100
7006 Native Am Students	15,000

Total Scholarship Donations	<hr/>	31,500
-----------------------------	-------	--------

Interest	<hr/>	284
Total Revenues	<hr/>	<hr/> 31,785

**EXPENDITURES:**

InvestED	4,764
----------	-------

6015 Dick Scobee mem	-2,000
6018 AHS Jr Masonic	-100
6088 Volney Wolters	-500
7005 AHS Booster Club	334
7006 Native Am Students	6,841

Total Expenditures	<hr/>	<hr/> 9,338
--------------------	-------	-------------

Excess of Revenue over (under) Expenditure	22,446
--	--------

Fund Balance - Beginning of the Year	<hr/>	538,192
--------------------------------------	-------	---------

Fund Balance - Year to Date	<hr/>	<hr/> \$ 560,638
-----------------------------	-------	------------------

**AUBURN SCHOOL DISTRICT NO 408**  
**NBN Employee Benefits Trust Fund Statement**  
**October 31, 2015**

**ADDITIONS:**

Contributions from Plan Members	\$ 47,118.00
Investment Earnings	<u>55.96</u>
Total Additions	<u>47,173.96</u>

**DEDUCTIONS:**

Benefits Claims	37,022.51
State Program Fees	<u>-</u>
Total Deductions	<u>37,022.51</u>

<b>NET DEDUCTIONS</b>	10,151.45
-----------------------	-----------

Net Assets at Beginning of Year	<u>132,368.51</u>
---------------------------------	-------------------

Net Assets Year To Date	<u><u>\$ 142,519.96</u></u>
-------------------------	-----------------------------

**AUBURN SCHOOL DISTRICT NO. 408**  
**Local Grants Received in October, 2015**

Donor	Recipient	Amount
Communities in Schools	Gildo Rey	\$1,644.14
Communities in Schools	Dick Scobee	\$1,687.55
Communities in Schools	Terminal Park	\$1,777.59
Communities in Schools	Cascade	\$2,121.20
Communities in Schools	Olympic	\$1,704.55
Coca Cola	Alpac	\$6.80
Dorian Studios	Lake View	\$936.14
PTA Donation	Lea Hill	\$20,000.00
Plygem Windows	Pioneer	\$1,018.00
Dorian Studios	Pioneer	\$786.62
PTA Donation	Hazelwood	\$270.00
PTA Donation	Hazelwood	\$152.81
Boeing Co.	Hazelwood	\$40.00
Dorian Studios	Cascade	\$936.35
Target	Mt. Baker	\$76.97
Wash Masonic Charities	AHS	\$2,500.00
King County	Pioneer	\$61,500.00
Total		<u><u>\$97,158.72</u></u>

## DIRECTORS

1. Approval of Minutes

The minutes of the regular meeting of Monday, November 9, have been forwarded to the board.

Recommendation: That the minutes be approved.

2. First Reading of Revised Policy 3207-Prohibition of Harassment, Intimidation, and Bullying; Revised Policy 3210-Nondiscrimination; and Revised Policy 5010-Nondiscrimination and Affirmative Action

The following revised policies are being submitted to the board for first reading: Policy 3207-Prohibition of Harassment, Intimidation, and Bullying; Policy 3210-Nondiscrimination; and Policy 5010-Nondiscrimination and Affirmative Action. Debbie Leighton, assistant superintendent of human resources, will introduce Mike Weibel, director human resources, who will present the revised policies and answer questions from the board.

Recommendation: That the above-mentioned revised policies be accepted for first reading with second reading and adoption scheduled for Monday, December 14.

3. Board Reorganization

The board will discuss board reorganization. Following is a suggested organization schedule:

2016 Ann Baunach, president, and Laurie Bishop, vice president

2017 Laurie Bishop, president, and Ray Vefik, vice president

2018 Ray Vefik, president, and Ryan Van Quill, vice president

Recommendation: That the board approve the reorganization schedule as presented.

4. Resolution No. 1211-Educational Program and Operations Replacement Levy

Resolution No. 1211-Educational Program and Operations Replacement Levy requests the King County Manager of Records and Elections and the Pierce County Auditor to call and conduct an election on February 9, 2016, and to submit to the voters of the Auburn School District Proposition 1 titled "Educational Program and Operations Replacement Levy." The resolution sets the amounts and estimates the tax rates as follows:

- ❑ 2017 tax year \$40,700,000 at an estimated rate of \$4.13 per thousand dollars of assessed valuation.
- ❑ 2018 tax year \$43,000,000 at an estimated rate of \$4.23 per thousand dollars of assessed valuation.
- ❑ 2019 tax year \$45,400,000 at an estimated rate of \$4.34 per thousand dollars of assessed valuation.
- ❑ 2020 tax year \$47,750,000 at an estimated rate of \$4.43 per thousand dollars of assessed valuation.

Recommendation: That the board approve Resolution No. 1211--Educational Program and Operations Replacement Levy, as presented.

The school board will share information gathered at the WSSDA conference held November 20-22, in Bellevue.

## 7. Executive Session

## **PROHIBITION OF HARASSMENT, INTIMIDATION AND BULLYING (DRAFT 11-23-15)**

The district is committed to a safe and civil educational environment for all students, employees, volunteers, and patrons, free from harassment, intimidation, or bullying. “Harassment, intimidation or bullying” means any intentionally written message or image, including those that are electronically transmitted; a verbal or physical act, including but not limited to one shown to be motivated by any characteristic in RCW 9A.36.080(3), (race, color, religion, ancestry, national origin, gender, sexual orientation or mental or physical disability); or other distinguishing characteristics, when an act:

- Physically harms a student or damages the student’s property; or
- Has the effect of substantially interfering with a student’s education; or
- Is so severe, persistent or pervasive that it creates an intimidating or threatening educational environment; or
- Has the effect of substantially disrupting the orderly operation of the school.

Nothing in this section requires the affected student to actually possess a characteristic that is a basis for the harassment, intimidation or bullying. “Other distinguishing characteristics” can include but are not limited to: physical appearance, clothing or other apparel, socioeconomic status, gender identity and marital status.

**Intentional acts” refers to the individual’s choice to engage in the act rather than the ultimate impact of the action(s).**

### **Behaviors/Expression**

Harassment, intimidation, or bullying can take many forms including: slurs, rumors, jokes, innuendos, demeaning comments, drawings, cartoons, pranks, gestures, physical attacks, threats, or other written, oral, physical, or electronically transmitted messages or images. ~~“Intentional acts” refers to the individual’s choice to engage in the act rather than the ultimate impact of the action(s).~~ This policy is not intended to prohibit expression of religious, philosophical, or political views, provided that the expression does not substantially disrupt the educational environment. Many behaviors that do not rise to the level of harassment, intimidation, or bullying may still be prohibited by other district policies or building, classroom or program rules.

This policy is a component of the district’s responsibility to create and maintain a safe, civil, respectful, and inclusive learning community and is to be implemented in conjunction with comprehensive training of staff and volunteers, including the education of students in partnership with families and the community. This policy is to be implemented in conjunction with the *Comprehensive Safe Schools Plan* that includes prevention, intervention, crisis response, recovery and annual review. Employees, in particular, are expected to support the dignity and safety of all members of the school community.



Depending upon the frequency and severity of the conduct, intervention, counseling, correction, discipline and/or referral to law enforcement will be used to remediate the impact on the victim and the climate and change the behavior of the perpetrator. This includes appropriate intervention, restoration of a positive climate and support for victims and others impacted by the violation. False reports or retaliation for harassment, intimidation and bullying also constitute violations of this policy.

The superintendent is authorized to direct the development and implementation of procedures addressing the elements of this policy, consistent with the complaint and investigation components of procedure 6590, Sexual Harassment.

#### **Students with Individual Education Plans or Section 504 Plans**

If allegations are proven that a student with an Individual Education Plan (IEP) or Section 504 Plan has been the target of harassment, intimidation or bullying, the school will convene the student's IEP or Section 504 team to determine whether the incident had an impact on the student's ability to receive a free, appropriate public education (FAPE). The meeting should occur regardless of whether the harassment, intimidation or bullying incident was based on the student's disability. During the meeting, the team will evaluate issues such as the student's academic performance, behavioral issues, attendance, and participation in extracurricular activities. If a determination is made that the student is not receiving a FAPE as a result of the harassment, intimidation or bullying incident, the district will provide additional services and supports as deemed necessary, such as counseling, monitoring and/or reevaluation or revision of the student's IEP or Section 504 plan, to ensure the student receives a FAPE.

#### **Retaliation/False Allegations**

Retaliation is prohibited and will result in appropriate discipline. It is a violation of this policy to threaten or harm someone for reporting harassment, intimidation, or bullying.

It is also a violation of district policy to knowingly report false allegations of harassment, intimidation, and bullying. Students or employees will not be disciplined for making a report in good faith. However, persons found to knowingly report or corroborate false allegations will be subject to appropriate discipline.

#### **Compliance Officer**

The superintendent will appoint a compliance officer as the primary district contact to receive copies of all formal and informal complaints and ensure policy implementation. The name and contact information for the compliance officer will be communicated throughout the district.

The superintendent is authorized to direct the implementation of procedures addressing the elements of this policy.

Cross References: **Policy 2161**

Policy 3200

Policy 3210

Policy 3240

Policy 3241

Policy 6590

**Special Education and Related  
Services for Eligible Students**

Rights and Responsibilities

Nondiscrimination

Student Conduct

Classroom Management, Corrective  
Action and Punishment

Sexual Harassment

Legal Reference: RCW 28A.300.285

Harassment, intimidation and bullying  
prevention policies **and  
procedures—Model policy and  
procedure—Training materials—  
Posting on website—Rules—  
Advisory committee**

**WAC 392-190**

**Equal Education Opportunity—  
Unlawful**

**WAC 392-190-059**

**Harassment, intimidation and  
bullying prevention policy and  
procedure—School Districts**

**WAC 392-190-0592**

**Public School Employment—  
Affirmative Action Programs**

Management Resources: **OCR Dear Colleague Letter Responding to Bullying of  
October, 2014 Students with Disabilities**

**December Issue 2014**

**Protecting Civil Rights of Students**

**October Issue 2010**

**Students on Student Harassment**

*Policy News*, April 2008

Cyberbullying Policy Required

*Policy News*, April 2002

Legislature Passes and Anti-Bullying  
Bill

**Adoption Date: 09.09.02**

**Auburn School District**

**Revised: 07.14.08; 02.14.11**

## NONDISCRIMINATION (DRAFT 11-23-15)

The district shall provide equal educational opportunity and treatment for all students in all aspects of the academic and activities program without regard to race, creed, color, national origin, **age**, sex, sexual orientation **including gender expression or identify, marital status**, or non-program-related physical, sensory or mental disabilities **or the use of a trained dog guide or service animal by a person with a disability**. RCW 49.60 Law Against Discrimination. District programs shall be free from sexual harassment.

The superintendent shall provide for the annual evaluation, periodic surveys, annual notice and complaint procedures as required by law to insure that there is in fact equal opportunity for all students in the district.

The board shall designate a staff member to serve as affirmative action/ Title IX compliance officer.

Cross References:	Board Policy 2020	Curriculum Development and Adoption
	<b>Board Policy 2030</b>	<b>Service Animals in Schools</b>
	Board Policy 2140	Guidance and Counseling
	Board Policy 2150	Co-Curricular Program
	<b>Board Policy 3207</b>	<b>Prohibition of Harassment, Intimidation and Bullying</b>
	<b>Board Policy 4260</b>	<b>Use of School Facilities</b>
Legal References:	RCW 28A.640.49.60	Sexual Equality
	49.60	<del>Discrimination—Human rights commission</del> <b>Prohibition</b>
	<b>WAC 392-190</b>	<b>Equal Education Opportunity – Unlawful</b>
	<b>WAC 392-190-020</b>	<b>Training—Staff responsibilities—Bias Awareness</b>
	<b>WAC 392-190-059</b>	<b>Public School Employment – Affirmative Action Programs</b>
	<b>WAC 392-190-060</b>	<b>Compliance—School district designation of responsible employee-- Notification</b>
	WAC 392-400-215	Student rights
	392-190	Equal Educational Opportunity--Sex Discrimination Prohibited
	42 U.S.C. §§ 12101-12213	Americans with Disabilities Act

### Management Resources:

**2014—December Issue**

**2013—April Issue**

**2012—December Issue**

**2011—June Issue**

*Policy News*, August 2007

Washington's Law Against Discrimination

**Adoption Date: 10.27.97**

**Auburn School District**

**Revised: 02.14.11**

## **NONDISCRIMINATION AND AFFIRMATIVE ACTION (DRAFT 11-23-15)**

### **Nondiscrimination**

The district shall provide equal employment opportunity and treatment for all applicants and staff in recruitment, hiring, retention, assignment, transfer, promotion and training. Such equal employment opportunity shall be provided without discrimination with respect to age; gender; race; color; creed; religion; national origin (including language); sex; sexual orientation including gender expression or identity; honorably discharged veteran or military status; the presence of any sensory, mental, or physical disability; and the use of a trained dog guide or service animal.

The board shall designate a staff member to serve as affirmative action/Title IX compliance officer.

### **Affirmative Action**

The district, as a recipient of public funds, is committed to undertake affirmative action which shall make effective equal employment opportunities for staff and applicants for employment. Such affirmative action shall include a review of programs, the setting of goals and the implementation of corrective employment procedures to increase the ratio of aged, disabled, ethnic minorities, women, and Vietnam veterans who are under-represented in the job classifications in relationship to the availability of such persons having requisite qualifications. Affirmative action plans may not include hiring or employment preferences based on gender or race, including color, ethnicity or national origin. Such affirmative action shall also include recruitment, selection, training, education and other programs.

The superintendent shall develop an affirmative action plan which specifies the personnel procedures to be followed by the staff of the district and shall ensure that no such procedures discriminate against any individual. Reasonable steps shall be taken to promote employment opportunities of those classes that are recognized as protected groups--aged, disabled, ethnic minorities and women and Vietnam veterans, although, under state law, racial minorities and women may not be treated preferentially in public employment.

This policy, as well as the affirmative action plan, regulations, and procedures developed according to it, shall be disseminated widely to staff in all classifications and to all interested patrons and organizations. Progress toward the goals established under this policy shall be reported annually to the board.

### **Employment of Persons with Disabilities**

In order to fulfill its commitment of nondiscrimination to those with disabilities, the following conditions shall prevail:

- A. No qualified person with disabilities shall, solely by reason of a disability, be subjected to discrimination, and the district shall not limit, segregate, or classify any applicants for employment or any staff member in any way that adversely affects his/her opportunities or status because of a disability. This prohibition applies to all aspects of employment from recruitment to promotions and includes fringe benefits and other elements of compensation.

- B. The district shall make reasonable accommodation to the known physical or mental limitations of an otherwise qualified applicant or staff member with disabilities unless it is clear that an accommodation would impose an undue hardship on the operation of the district program. Such reasonable accommodations may include:
1. Making facilities used by staff readily accessible and usable by persons with disabilities; and
  2. Job restructuring, part-time or modified work schedules, acquisition or modification of equipment or devices, the provision of readers or interpreters, and other similar actions. In determining whether or not accommodation would impose an undue hardship on the district, factors to be considered include the nature and cost of the accommodation.
- C. The district shall not make use of any employment test or criteria that screens out persons with disabilities unless:
1. The test or criteria is clearly and specifically job related; and
  2. Alternative tests or criteria that do not screen out persons with disabilities are available.
- D. While the district may not make pre-employment inquiry as to whether an applicant has a disability or as to the nature and severity of any such disability, it may inquire into an applicant's ability to perform job-related functions.
- E. Any staff member who believes that there has been a violation of this policy or the law prohibiting discrimination because of a disability may initiate a grievance through the procedures for staff complaints.

### **Nondiscrimination for Military Service**

The district will not discriminate against any person who is a member of, applies to be a member, or performs, has performed, applies to perform, or has an obligation to perform service in an uniformed service, on the basis of that participation in an uniformed service. This includes in initial employment, retention in employment, promotion, or any benefit of employment. The district will also not discriminate against any person who has participated in the enforcement of these rights under state or federal law.

Cross References:	Board Policy 5270 Board Policy 5407	Resolution of Staff Complaints Military Leave
Legal References:	RCW 28A.400.310 RCW 28A.640.020 RCW 49.60 RCW 49.60.030 RCW 49.60.180 RCW 49.60.400 Chapter 73.16 RCW	Law against discrimination applicable to district's employment practices Regulations, guidelines to eliminate discrimination--Scope Discrimination--Human rights commission Freedom from discrimination--Declaration of civil rights Unfair practices of employer defined Discrimination, preferential treatment prohibited. Employment and Re-employment
		Policy No. 5010

**WAC 392-190**

**WAC 392-190-0592**

**WAC 392-200**

**WAC 392-200-015**

42 USC 2000c – 2000c-9

42 USC 2000h – 2000h-6

42 USC 12101 – 12213

29 USC 706

8 USC 1324a and 1324b

38 USC §§ 2021 -2024

45 CFR 84 Sec 504

Executive Order 11246 Amended by Executive Order 11375

**Equal Education Opportunity—  
Unlawful**

**Public School Employment—**

**Affirmative Action Programs**

School personnel--Employment  
Discrimination

Public school employment--affirmative  
action program

Title VII of the Civil Rights Act of 1964

Title IX Educational Amendments of  
1972

Americans with Disabilities Act

(IRCA) Immigration Reform and  
Control Act of 1986

Uniformed Services Employment and  
Reemployment Rights Act

Vocational Rehabilitation Act of 1973

Management Resources: *Policy News*, August 2007

*Policy News*, June 2001

Washington's Law Against  
Discrimination

State Updates Military Leave Rights

**Adoption Date: 03.10.97**

**Auburn School District**

**Revised: 06.14.04; 05.09.11; 05.14.12; 06.25.12**

AUBURN SCHOOL DISTRICT NO. 408  
KING AND PIERCE COUNTIES, WASHINGTON

EDUCATIONAL PROGRAM AND OPERATIONS REPLACEMENT LEVY

---

RESOLUTION NO. 1211

- A RESOLUTION of the Board of Directors of Auburn School District No. 408, King and Pierce Counties, Washington, providing for the submission to the qualified electors of the District at a special election to be held therein on February 9, 2016, of the proposition of whether excess taxes should be levied of \$40,700,000 in 2016 for collection in 2017, \$43,000,000 in 2017 for collection in 2018, \$45,400,000 in 2018 for collection in 2019 and \$47,750,000 in 2019 for collection in 2020, said excess taxes to pay part of the educational program and operations support of the District.

ADOPTED NOVEMBER 23, 2015

PREPARED BY:

K&L GATES LLP  
Seattle, Washington

## RESOLUTION NO. 1211

- A RESOLUTION of the Board of Directors of Auburn School District No. 408, King and Pierce Counties, Washington, providing for the submission to the qualified electors of the District at a special election to be held therein on February 9, 2016, of the proposition of whether excess taxes should be levied of \$40,700,000 in 2016 for collection in 2017, \$43,000,000 in 2017 for collection in 2018, \$45,400,000 in 2018 for collection in 2019 and \$47,750,000 in 2019 for collection in 2020, said excess taxes to pay part of the educational program and operations support of the District.

WHEREAS, Auburn School District No. 408, King and Pierce Counties, Washington (the "District"), for the past four years has had in effect a maintenance and operations levy in order to enable the District to pay for its educational programs and services, including teaching, school supplies, technology, athletics, buildings and transportation; and

WHEREAS, the current maintenance and operations levies expire this year; and

WHEREAS, the money in and to be paid into the General Fund of the District during the 2016-2017, 2017-2018, 2018-2019, 2019-2020, and 2020-2021 school years will be insufficient to enable the District to pay for necessary maintenance and operations and to properly meet the educational needs of the students attending District schools; and

WHEREAS, in order to properly provide for such maintenance and operations and such educational needs, the Board of Directors of the District deems it necessary to levy the following taxes upon all of the taxable property within the District in excess of the maximum annual tax levy permitted by law to be levied within the District without a vote of the electors:

- A. A tax of approximately \$4.13 per thousand dollars of assessed valuation to provide \$40,700,000, said levy to be made in 2016 for collection in 2017;
- B. A tax of approximately \$4.23 per thousand dollars of assessed valuation to provide \$43,000,000, said levy to be made in 2017 for collection in 2018;
- C. A tax of approximately \$4.34 per thousand dollars of assessed valuation to provide \$45,400,000, said levy to be made in 2018 for collection in 2019;



- D. A tax of approximately \$4.43 per thousand dollars of assessed valuation to provide \$47,750,000, said levy to be made in 2019 for collection in 2020; and

WHEREAS, the Constitution and laws of the State of Washington require that the question of whether or not such excess taxes may be levied must be submitted to the qualified electors of the District for their ratification or rejection;

NOW, THEREFORE, BE IT RESOLVED BY THE BOARD OF DIRECTORS OF AUBURN SCHOOL DISTRICT NO. 408, KING AND PIERCE COUNTIES, WASHINGTON, as follows:

Section 1. The following taxes for the District's General Fund should be levied upon all of the taxable property within the District in excess of the maximum annual tax levy permitted by law to be levied within the District without a vote of the electors:

- A. \$40,700,000, said levy to be made in 2016 for collection in 2017;
- B. \$43,000,000, said levy to be made in 2017 for collection in 2018,
- C. \$45,400,000, said levy to be made in 2018 for collection in 2019; and
- D. \$47,750,000, said levy to be made in 2019 for collection in 2020.

The estimated levy rate depends upon the final dollar amount of assessed value of the property within the District. At this time, based upon information provided by the King County Assessor's office, the estimated levy rate for the 2016 levy is \$4.13 per thousand dollars of assessed valuation, the estimated levy rate for the 2017 levy is \$4.23 per thousand dollars of assessed valuation, the estimated levy rate for the 2018 levy is \$4.34 per thousand dollars of assessed valuation and the estimated levy rate for the 2019 levy is \$4.43 per thousand dollars of assessed valuation. The exact levy rate shall be adjusted based upon the actual assessed value of the property within the District at the time of the levy. Upon approval by the voters of the

proposition substantially in the form set forth below, the District may use the proceeds of said levies during the 2016-2017, 2017-2018, 2018-2019, 2019-2020, and 2020-2021 school years by incurring an indebtedness by the issuance of short term obligations against the General Fund of the District, as authorized by Chapter 39.50 RCW, and may expend the proceeds of said levies to pay such part of the general expenses of maintenance and operations of the District during such school years as may be authorized or allowed by law for the use of excess levy funds.

Section 2. It is hereby found and declared that the best interests of the District require submission to the qualified electors of the District of the proposition of whether or not the District shall levy such excess tax for their ratification or rejection at a special election to be held therein on February 9, 2016.

King County Elections, as *ex officio* supervisor of elections in King County, Washington, is hereby requested to call and conduct said special election to be held within the District in King and Pierce Counties on said date and to submit to the qualified electors of the District the proposition substantially in the form hereinafter set forth.

The Secretary of the Board of Directors is hereby authorized and directed to certify said proposition substantially in the following form:

PROPOSITION NO. 1

AUBURN SCHOOL DISTRICT NO. 408

EDUCATIONAL PROGRAM AND OPERATIONS REPLACEMENT LEVY

The Board of Directors adopted Resolution No. 1211 concerning educational funding. This proposition authorizes the District to levy the following excess taxes, to replace an expiring levy, on all taxable property within the District, to support the District's educational program and operations:

Collection Years	Approximate Levy Rate/\$1,000 Assessed Value	Levy Amount
2017	\$4.13	\$ 40,700,000
2018	\$4.23	\$ 43,000,000
2019	\$4.34	\$ 45,400,000
2020	\$4.43	\$ 47,750,000

all as provided in the Resolution. Should this proposition be approved?

YES ..... ☐

NO ..... ☐

The Secretary of the Board of Directors of the District is hereby directed to deliver a certified copy of this resolution to King County Elections and a courtesy copy to the Pierce County Auditor.

ADOPTED by the Board of Directors of Auburn School District No. 408, King and Pierce Counties, Washington, at a regular meeting thereof, held on the 23rd day of November, 2015.

AUBURN SCHOOL DISTRICT NO. 408,  
KING AND PIERCE COUNTIES,  
WASHINGTON

---

President and Director

---

Director

---

Director

---

Director

---

Director

ATTEST:

---

Secretary, Board of Directors

## CERTIFICATE

I, the undersigned, Secretary of the Board of Directors of Auburn School District No. 408, King and Pierce Counties, Washington, (the “District”) and keeper of the records of the Board of Directors (the “Board”), DO HEREBY CERTIFY:

1. That the attached resolution is a true and correct copy of Resolution No. 1211 of the Board (the “Resolution”), duly adopted at a regular meeting thereof held on the 23rd day of November, 2015.

2. That said meeting was duly convened and held in all respects in accordance with law, and to the extent required by law, due and proper notice of such meeting was given; that a legal quorum was present throughout the meeting and a legally sufficient number of members of the Board voted in the proper manner for the adoption of the Resolution; that all other requirements and proceedings incident to the proper passage of the Resolution have been duly fulfilled, carried out and otherwise observed; and that I am authorized to execute this certificate.

IN WITNESS WHEREOF, I have hereunto set my hand this 23rd day of November, 2015.

---

Secretary, Board of Directors

OFFICIAL BALLOT  
AUBURN SCHOOL DISTRICT NO. 408  
KING AND PIERCE COUNTIES, WASHINGTON  
February 9, 2016

---

INSTRUCTIONS TO VOTERS: To vote in favor of the following proposition, place a cross (X) in the square opposite the word "YES"; to vote against the following proposition, place a cross (X) in the square opposite the word "NO."

---

PROPOSITION NO. 1

AUBURN SCHOOL DISTRICT NO. 408

EDUCATIONAL PROGRAM AND OPERATIONS REPLACEMENT LEVY

The Board of Directors adopted Resolution No. 1211 concerning educational funding. This proposition authorizes the District to levy the following excess taxes, to replace an expiring levy, on all taxable property within the District, to support the District's educational program and operations:

Collection Years	Approximate Levy Rate/\$1,000 Assessed Value	Levy Amount
2017	\$4.13	\$ 40,700,000
2018	\$4.23	\$ 43,000,000
2019	\$4.34	\$ 45,400,000
2020	\$4.43	\$ 47,750,000

all as provided in the Resolution. Should this proposition be approved?

YES..... ☐

NO..... ☐

NOTICE  
AUBURN SCHOOL DISTRICT NO. 408  
KING AND PIERCE COUNTIES, WASHINGTON  
February 9, 2016

---

NOTICE IS HEREBY GIVEN that on February 9, 2016, a special election will be held in the above-named school district for the submission to the qualified electors of said school district of the following proposition:

PROPOSITION NO. 1  
AUBURN SCHOOL DISTRICT NO. 408  
EDUCATIONAL PROGRAM AND OPERATIONS REPLACEMENT LEVY

The Board of Directors adopted Resolution No. 1211 concerning educational funding. This proposition authorizes the District to levy the following excess taxes, to replace an expiring levy, on all taxable property within the District, to support the District's educational program and operations:

Collection Years	Approximate Levy Rate/\$1,000 Assessed Value	Levy Amount
2017	\$4.13	\$ 40,700,000
2018	\$4.23	\$ 43,000,000
2019	\$4.34	\$ 45,400,000
2020	\$4.43	\$ 47,750,000

all as provided in the Resolution. Should this proposition be approved?

YES ..... ☐

NO ..... ☐

---

King County Elections